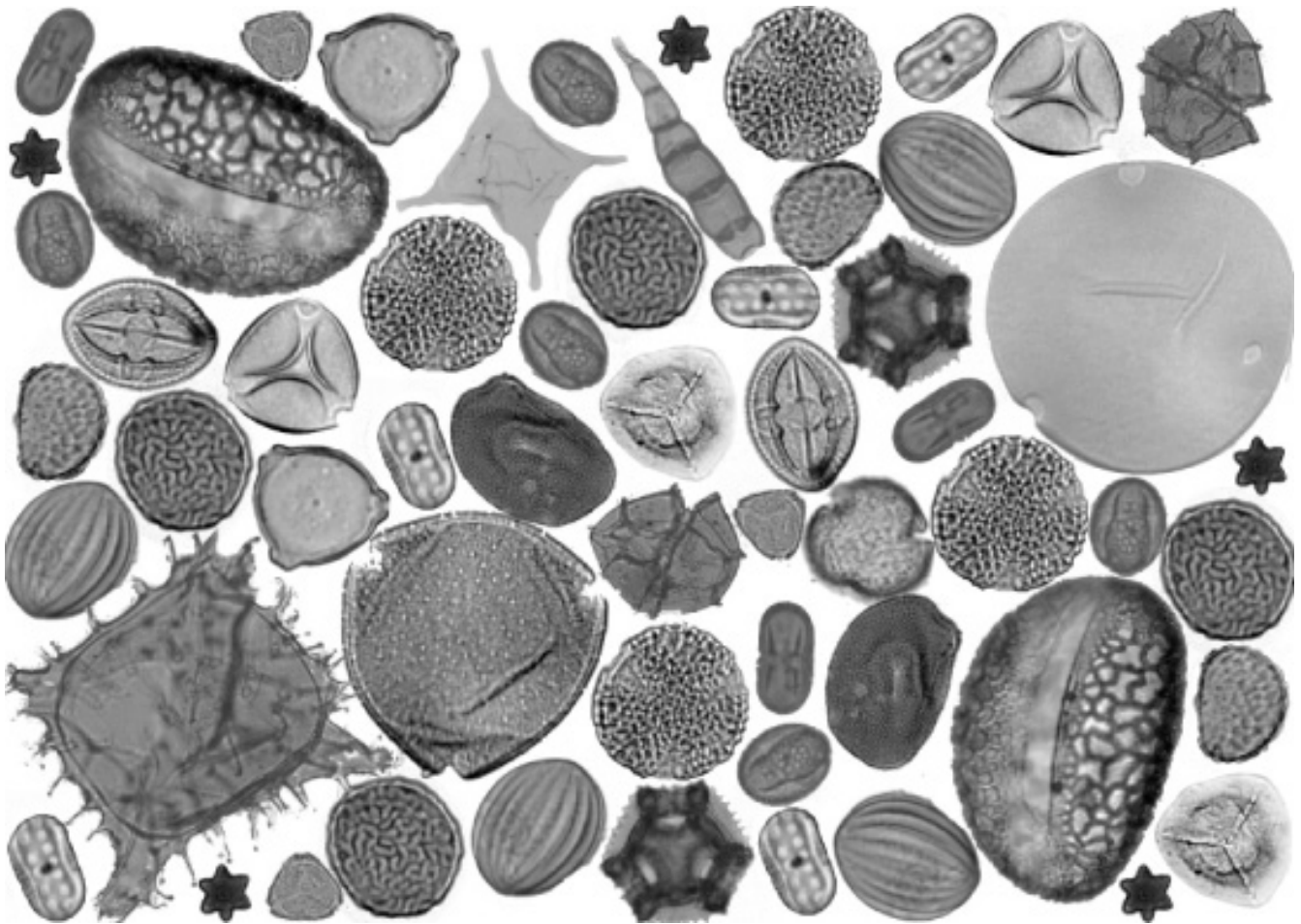


# AASP – The Palynological Society

Promoting the Scientific Understanding of Palynology since 1967



# NEWSLETTER

March 2024

Volume 57, Number 1

Published Quarterly



# AASP – TPS NEWSLETTER

Published Quarterly by AASP – The Palynological Society

March 2024, Volume 57, Number 1

## CONTENTS

**Page 3** | List of AASP – TPS awardees

**Page 4** | Board of Directors and upcoming deadlines

**Page 5** | A Message from our President

**Page 13** | AASP – TPS 50th Anniversary Jewelry Collection

**Page 14** | Managing Editor's report

**Page 16** | Awards Committee News

**Page 20** | What's this palynomorph?

**Page 21** | Publish in the AASP Contribution Series!

**Page 22** | Upcoming Meeting

**Page 23** | AASP Foundation Century Club



# AASP

The Palynological Society

The American Association of Stratigraphic Palynologists, Inc. - AASP – The Palynological Society - was established in 1967 by a group of 31 founding members to promote the science of palynology. Today AASP has a world-wide membership of about 200 and is run by an executive comprising an elected Board of Directors and subsidiary boards and committees. AASP welcomes new members.

The AASP Foundation publishes the journal *Palynology* (quarterly), the *AASP Newsletter* (quarterly), and the *AASP Contributions Series* (mostly monographs, issued irregularly), as well as several books and miscellaneous items. AASP organises an Annual Meeting which usually includes a field trip, a business luncheon, social events, and technical sessions where research results are presented on all aspects of palynology.

#### **AASP-TPS Scientific Medal recipients**

Professor William R. Evitt (awarded 1982)  
Professor William G. Chaloner (awarded 1984)  
Dr. Lewis E. Stover (awarded 1988)  
Dr. Graham Lee Williams (awarded 1996)  
Dr. Hans Gocht (awarded 1996)  
Professor Svein B. Manum (awarded 2002)  
Professor Barrie Dale (awarded 2004)  
Dr. David Wall (awarded 2004)  
Dr. Robin Helby (awarded 2005)  
Dr. Satish K. Srivastava (awarded 2006)  
Professor Estella B. Leopold (awarded 2013)  
Professor Vaughn M. Bryant (awarded 2016)  
Professor David Batten (awarded 2018)

#### **AASP-TPS Honorary Members**

Professor Dr. Alfred Eisenack (elected 1975)  
Dr. William S. Hoffmeister (elected 1975)  
Professor Leonard R. Wilson (elected 1975)  
Professor Knut Faegri (elected 1977)  
Professor Charles Downie (elected 1982)  
Professor William R. Evitt (elected 1989)  
Professor Lucy M. Cranwell (elected 1989)  
Dr. Tamara F. Vozzhennikova (elected 1990)  
Professor Aural T. Cross (elected 1991)  
Dr. Robert T. Clarke (awarded 2002)  
Professor Vaughn Bryant (awarded 2005)  
Professor Alfred Traverse (awarded 2005)  
Professor Bernard Owens (awarded 2011)  
Dr. John E. Williams (awarded 2013)  
Mr. Paul W. Nygreen (awarded 2013)  
Professor Norman Norton (awarded 2016)  
Professor George F. Hart (awarded 2020)

#### **AASP-TPS Board of Directors Award recipient**

Dr. Robert T. Clarke (awarded 1994)  
Dr. Thomas D. Demchuk (awarded 2014)

#### **AASP-TPS Medal for Excellence in Education**

Professor Aural T. Cross (awarded 1999)  
Professor Alfred Traverse (awarded 2001)  
Professor Bill Evitt (awarded 2006)  
Professor Vaughn M. Bryant (awarded 2013)  
Professor Geoffrey Clayton (awarded 2016)  
Professor Sophie Warny (awarded 2021)  
Professor Francisca Oboh-Ikuenobe (awarded 2023)

#### **AASP-TPS Distinguished Service Award recipients**

Dr. Robert T. Clarke (awarded 1978)  
Dr. Norman J. Norton (awarded 1978)  
Dr. Jack D. Burgess (awarded 1982)  
Dr. Richard W. Hedlund (awarded 1982)  
Dr. John A. Clendening (awarded 1987)  
Dr. Kenneth M. Piel (awarded 1990)  
Dr. Gordon D. Wood (awarded 1993)  
Dr. Jan Jansonius (awarded 1995)  
Dr. D. Colin McGregor (awarded 1995)  
Professor John H. Wrenn (awarded 1998)  
Professor Vaughn M. Bryant (awarded 1999)  
Dr. Donald W. Engelhardt (awarded 2000)  
Dr. David T. Pocknall (awarded 2005)  
Dr. David K. Goodman (awarded 2005)  
Professor Owen K. Davis (awarded 2005)  
Dr. Thomas Demchuk (awarded 2009)  
Professor Reed Wicander (awarded 2014)  
Professor Fredrick Rich (awarded 2016)  
Dr. James B. Riding (awarded 2016)  
Professor Martin B. Farley (awarded 2019)  
Professor Jennifer O'Keefe (awarded 2023)



# AASP – TPS NEWSLETTER

Published Quarterly by AASP – The Palynological Society

March 2024  
ISSN 0732-6041

Volume 57, Number 1  
Jan Hennissen, Editor

## BOARD OF DIRECTORS

President  
Past President  
Secretary  
Treasurer  
Managing Editor  
Webmaster  
Newsletter Editor  
Directors at Large  
Student Director-at-large

Sophie Warny: 2023 – 2024  
Niall Paterson: 2023 – 2024  
Stephen Stukins: 2023 – 2024  
Vladimir Torres: 2023– 2024  
James Riding: 2023–2024  
Fabienne Marret  
Jan Hennissen  
Alex Wheeler: 2023– 2025  
Martha Gibson: 2022 – 2024  
Opeyemi Taiwo: 2022 – 2024

## AASP NEWSLETTER CORRESPONDENTS

Kasia K. Śliwińska  
Carlos Santos  
Ingrid Romero Valero and V.A. Korasidis  
Nivedita Mehrotra  
Peta Mudie and Elena Marinova  
Julia Gravendyck  
Philippe Steemans  
Stephen Louwye  
Salma Hamed  
Annette Götz  
\*\*\*Available\*\*\*  
A. Wheeler and J.J. Cooling  
Andres Pardo Trujillo

Nordic Countries  
United Kingdom  
United States  
India  
Black Sea region  
Germany  
French-speaking Belgium  
Flemish-speaking Belgium  
North Africa  
South Africa  
Asia  
Australia  
South America

## AASP BOOK REVIEW EDITOR

Alexander Ball

To express interest in open positions, please send an email to: [aaspnews@gmail.com](mailto:aaspnews@gmail.com)

## AASP WEBMASTER

Fabienne Marret & Julia Gravendyck, [aaspwebmaster@gmail.com](mailto:aaspwebmaster@gmail.com), website: <http://www.palynology.org>

## AASP NEWSLETTER EDITOR

Jan Hennissen, [aaspnews@gmail.com](mailto:aaspnews@gmail.com), Keyworth, UK

## AASP NEWSLETTER GRAPHIC DESIGN (From December 2021 Issue onward)

Filipe Barreira, Laboratório Nacional de Energia e Geologia (LNEG), S. Mamede Infesta, Portugal

The AASP – TPS Newsletter is published four times annually. Members are encouraged to submit articles, “letters to the editor,” technical notes, meetings reports, information about “members in the news,” new websites and information about job openings. Every effort will be made to publish all information received from our membership. Contributions which include photographs should be submitted two weeks before the deadline. **Deadline for submission for the next issue of the newsletter is May 15, 2024.** All information should be sent by email. If possible, please illustrate your contribution with art, line drawings, eye-catching logos, black & white photos, colour photos, etc. **We DO look forward to contributions from our members.**

# A Message From Our President

Dear friends,

The beautiful city of Montpellier is waiting for us ! Severine Fauquette and her team have put together an amazing program. Please take a minute to register and submit your abstract so that we can finalize all registrations. I would recommend that you reserve your hotel as soon as possible as there are a lot of competing events in this Mediterranean city this summer.

Website:

<https://palynology.org/56th-annual-meeting-aasp-the-palynological-society/>

Dates :

56th Annual Meeting AASP-The Palynological Society

Montpellier, France

June 24th – 28th, 2024

Organizing Committee :

S  verine Fauquette (ISEM, CNRS, Univ. Montpellier, France)

Sophie Warny (CENEX, Louisiana State Univ., US)

Vincent Montade (ISEM, CNRS, Univ. Montpellier, France)

Vincent Girard (ISEM, CNRS, Univ. Montpellier, France)

Ana Ejarque (ISEM, CNRS, Univ. Montpellier, France)

Reyes Luelmo (ISEM, Univ. Montpellier, France)

Jean-Pierre Suc (ISTeP, CNRS, Univ. Paris Sorbonne, France)

Yannick Miras (Mus  um National d'Histoire Naturelle, Paris, France)

## Conference program at a glance

Sunday June 23<sup>rd</sup>:

Arrival in Montpellier (3 public transport options):

- Montpellier Meditteranee airport : about a 25-minute drive to the conference site
- Train station 1: Gare Montpellier Saint Roch, walking distance to conference site in the historic center
- Train station 2 : Gare Montpellier Sud de France, 30 minutes of public transportation (bus from station to tram line 1). Line 1 will take you to the historic downtown (or Uber/taxi). Another option is to fly to Paris, then take a direct train to Montpellier, either to Gare StRoch or Gare Montpellier Sud de France.

Other options are to fly to London, Barcelona, and other European airports and take trains.

Monday June 24<sup>th</sup>

Pre-conference field trip (one short day) and Ice breaker in the evening

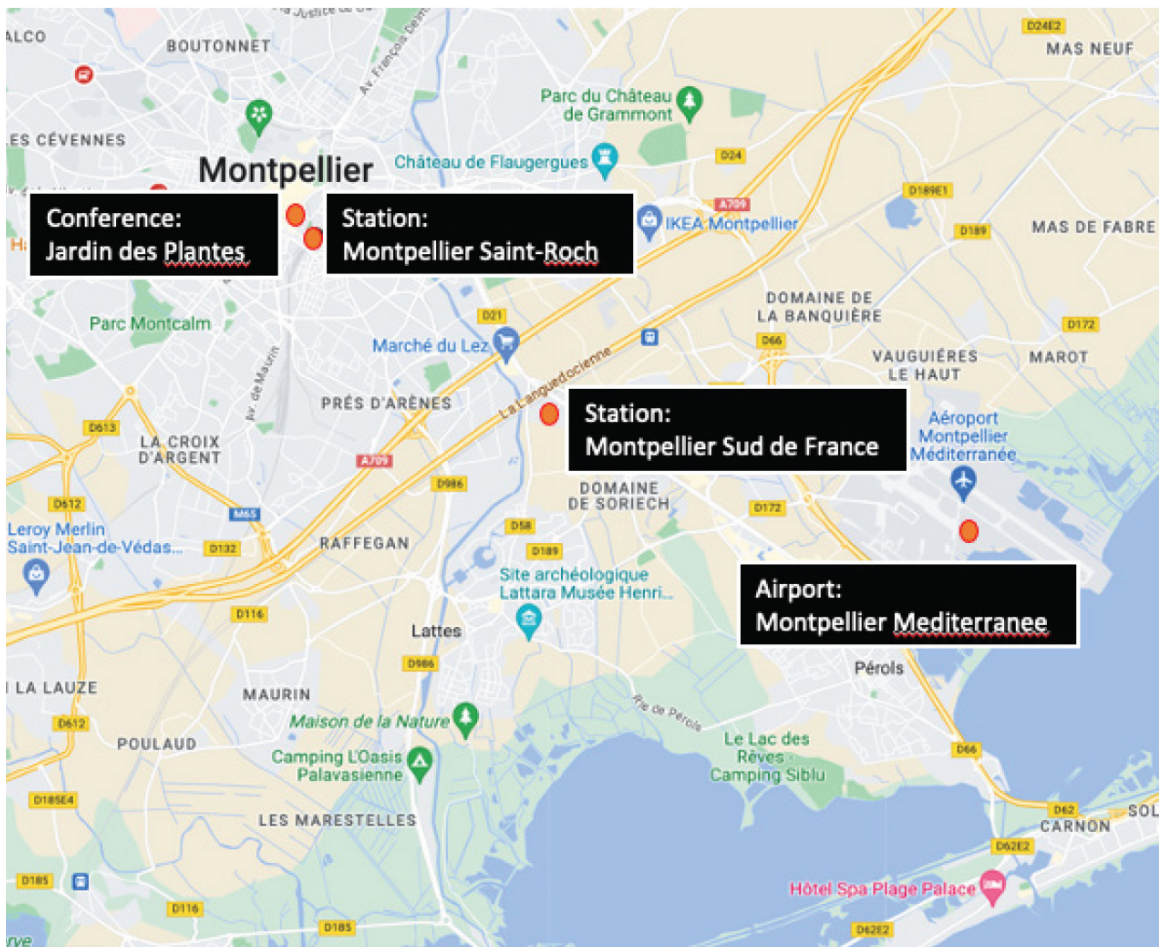
Tuesday, Wednesday, Thursday June 25<sup>th</sup>-27<sup>th</sup>

A three-day conference program

Conference dinner on Wednesday evening

Friday June 28<sup>th</sup>

Post-conference field trip (one long day)



## Pre-conference field trip

Monday June 24<sup>th</sup>

1 short day to be back for the ice-breaker reception

Topic covered: The Rhone delta, Camargue

Deltaic environments, climate, flora and fauna in salt-water and fresh-water marshes, saline basin and salt extraction (pictured below to the right), visit of towns of Aigues Mortes (pictured below to the left) and Saintes Maries de la Mer.

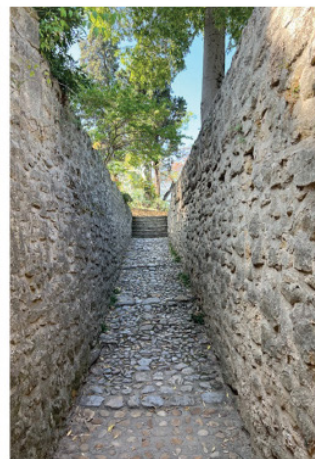
Guides: Jean-Pierre Suc (ISTeP, Paris) and Serge Muller (ISEM, Montpellier).



## Ice-breaker

Monday June 24<sup>th</sup> evening

Jardin des Plantes. Drinks and appetizers: included in the registration. Guest will be free to wander around the gardens.



## Technical programme

Tuesday - Thursday June 25<sup>th</sup>-27<sup>th</sup> will be in the historic Botanical Institute of Montpellier

Conference lectures and poster presentations will be in the “Amphitheatre Charles Flahaut” of the former University of Montpellier’s Botanical Institute which is listed as a Historical Monument of France (see pictures below). This building houses the Montpellier Herbarium, which will be accessible during the event. It is also adjacent to the Jardins des Plantes.

Sessions proposed so far include, but are not restricted to:

- From palynological data to climate reconstructions and model simulations
- Human-environmental interactions and vegetation change
- Vegetation dynamics beyond the Quaternary as a source of information about mountain uplift, plate tectonics, sea-level fluctuations etc.
- A Herb Sullivan-dedicated session “The top 20 palynomorphs for stratigraphy or environment”
- A session focusing on dinoflagellate research.





## Early Career Networking lunch

Tuesday 25<sup>th</sup> June in the Historic downtown, at the old school of Pharmacy restaurant: La Panacee

This is a short 10-minute walk from the Institut de Botanique, through the beautiful old town.

Main course plus soft drink or appetizer, plus café will be offered to all students and post-doc attending the meeting to encourage networking across various laboratories. See pictures of the Panacee restaurant below.



## Conference dinner

Wednesday 26<sup>th</sup> June evening at the Château de Flaugergues

Listed as a Historic Monument, this château is located in the heart of the vineyards on the slopes of La Méjanelle. Built at the late 17th century in the Montpellier countryside, Flaugergues is one of the so-called “folies”, an aristocrat mansion. Around the château, the park and gardens are a place of charm and harmony. In front of the château, the “à la française” garden has been classified as a “remarkable garden”. We propose a site visit + wine tasting + countryside 3-course dinner/wine for 69 euros.



## Lodging

The city of Montpellier offers a wide range of accommodation (hotels, Airbnb), suitable for all budgets. We recommend that participants select a hotel in the historic center (see map of hotels/Airbnb) at walking distance from the conference sites, or to select a hotel close to one of the tram lines. Don't wait too long. There are several big events in Montpellier in the summer. As an alternate options, there are towns such as "La Grande Motte" or "Carnon" created in the 1960's that are on the beach, and about a 30-minutes drive to the historic center. This would require paying public parking in the historic town centre. There is public transport between the beach and Montpellier, but it would take about 90 minutes of bus and tram.

## Post-conference field trip

Friday June 28th

Location and topic: Graissessac, Lac du Salagou and Mourèze (Coal mine, Permian volcanism, dolomite, paleoenvironment, vegetation change, plant macrofossils, trace fossils, paleoclimate)

Guides: Anne-Laure Decombeix (AMAP, Montpellier), Rodolphe Tabuce (ISEM, Montpellier) and Michel Lopez (Géosciences Montpellier).



## Registration

	Early Bird (before May 1st)	Regular (May 1st onwards)
Student member	USD\$ 250	USD\$ 275
Student non-member	USD\$ 285	USD\$ 300
Professional member	USD\$ 350	USD\$ 375
Professional non-member	USD\$ 400	USD\$ 425

### For ECR only (students and post-docs)

ECR Luncheon: If you are an ECR and interested to join this event, please add this item to your registration so that we can get a head count. It is free.

### Optional for all

Conference dinner: USD\$ 75

AASP-Business Luncheon (26th June): USD\$ 25

Pre-meeting field trip: USD\$ 130

Post-meeting field trip: USD\$ 130

## Additional free scientific visits on demand

If you are interested, you can contact Severine Fauquette during the meeting for these options:

### Option 1: Visits to the ISEM palynological reference collection

With more than 30,000 taxa, this is certainly one of the world largest collections. It was first built in 1945 when the Palynology Laboratory was founded by Madeleine Van Campo at the National Museum of Natural History in Paris. It moved to Montpellier in 1967 and it is now located at the ISEM laboratory. The collection is since then maintained and enriched with new samples, taken directly from plants during missions, from samples in herbarium, or obtained by exchange with other laboratories with French and foreign herbaria.

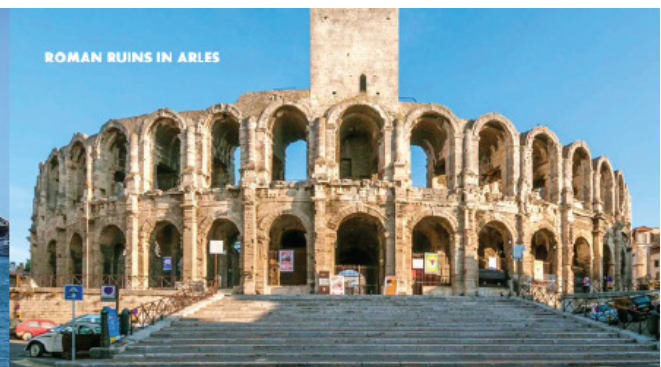
**Option 2: Visits to the Montpellier Herbarium** may be organised for those who would like to sample flowers of some species to extract and observe the pollen grains.

**Option 3: Visit of the Jardin des Plantes with a botanist** may also be organized. One of its notable specimens is the famous *Ginkgo biloba* (male tree) planted in 1795 and grafted with a female branch in 1830. The Botanical garden of Montpellier was founded in 1593 and is part of the heritage of the Faculty of Medicine of Montpellier and the University of Montpellier. It is the oldest botanical garden in France (see pictures below).



## Tourism options

For family members traveling with participants or for those who would like to stay a few additional days, there are many sites of interest in and near Montpellier. The historic center in Montpellier is gorgeous. Restaurants and cafes are around every corner. There are also many unique beach towns of interest in that part of the Mediterranean region.



We can't wait to see you in Montpellier this summer and enjoy some great palynological discussions, lectures, field trips and meet with old and new colleagues.

Sophie Warny

Professor of Palynology & Curator; President, AASP-The Palynological Society

Department of Geology and Geophysics & Museum of Natural Science

Louisiana State University E235 Howe Russell Geoscience Complex (Office room 109), Baton Rouge, La 70803

office 225-578-5089 | fax 225-578-2302; [swarny@lsu.edu](mailto:swarny@lsu.edu) | [www.geol.lsu.edu/warny](http://www.geol.lsu.edu/warny)

# AASP – TPS 50th Anniversary Jewelry Collection

*Exclusive, Custom-made 50th Anniversary Jewelry*

*Limited-Edition and availability*



Special thanks to John Firth and Ingrid Romero for palynomorph images.

**Celebrate the 50th anniversary of AASP – The Palynological Society with a beautiful, sterling silver palynomorph necklace.** The Society board worked with jeweler and designer, 'Science-inspired jewelry', to create these one-of-a-kind, unique necklaces in honor of our golden anniversary. There are a limited number available of two designs, a pollen grain *Macrolobium multijugum* (a) and a dinoflagellate cyst of *Diphyes recurvatum* (b).

Each necklace comes with a commemorative information card that includes a picture and description of the palynomorph. **The society is selling them now for \$60.00 OR one *M. multijugum* + one *D. recurvatum* for \$100.00.** This is a wonderful way to support AASP-TPS and is a great conversation starter!

Payment can be arranged by contacting the AASP-TPS Treasurer, Vladimir Torres, at [vladimir.torres@exxonmobil.com](mailto:vladimir.torres@exxonmobil.com).

# Managing Editor's Report

by Jim Riding

The first part of Palynology Volume 48, for 2024, was published online recently (see: <https://www.tandfonline.com/toc/tpal20/current>). This issue comprises 175 pages, and includes one obituary (for Roger Neves) and 11 research articles. These items make this part both diverse and interesting.

There is a very unusual paper by Kevin Edwards and Pia Östensson on an extremely fascinating aspect of the work of the great Gunnar Erdtman.

The full contents of Volume 48/1 are listed below. The next issue, number two, will be published online and in print during early May 2024. This part is complete, and the final running order will be decided upon during the next few weeks.

The Editorial Team had a very constructive annual business meeting with our counterparts at Taylor and Francis during early January. Manuscript submission rates have been very good indeed recently. Please keep them coming in and remember we are no longer constrained by an annual page budget. Thank you very much for your continued support of Palynology.

As ever, thank you very much for your continued support of Palynology.

James B. Riding  
Managing Editor, AASP – The Palynological Society  
British Geological Survey  
Keyworth, Nottingham NG12 5GG, UK  
E-mail: [jbri@bgs.ac.uk](mailto:jbri@bgs.ac.uk)

## The contents of Palynology Volume 48, Part 1 (February 2024)

### Obituary

1. McLean, D. and Riding, J.B. Roger Neves (1932–2020). Article number 2277630, 4 pp.

### Research Articles

2. Gómez-Lizárraga, L.E., Ramírez-Arriaga, E., Mendoza-Garfías, M.B., Prámparo, M.B. and Valiente-Banuet, A. Pollen morphology of columnar cacti from Tehuacán-Cuicatlán Valley, Mexico. Article number 2251560, 18 pp.

3. Escobar-Torrez, K., Cassino, R.F. and Ledru, M.-P. Relationship between pollination syndromes, pollen morphology and plant ecology in Quaternary deposits of the Cerrado. Article number 2252871, 20 pp.

4. Lazar, J., Prasad, S., Barboni, D., Das, L., Kumaresan, V. and Anupama, K. Diversity matters: Diet of *Apis cerana* in southeast India includes one consistently occurring and several seasonally available floral sources. Article number 2255990, 14 pp.

5. Chi, C., Xiao, X., Wang, J., Ke, R. and Jai, B. The vertical distribution of modern pollen in the southeastern edge of the Tibetan Plateau, China. Article number 2258941, 15 pp.

6. Chalabe, A.C., Olivera, D.E., Martínez, M.A. and Zavala, C. Palaeoenvironments and palaeoclimate of the uppermost Cuyo Group and lowermost Lotena Group at Quebrada Álvarez, Picún Leufú Sub-basin, Patagonia, Argentina: a preliminary study based on palyno-

logy. Article number 2254364, 18 pp.

7. Edwards, K.J. and Östensson, P. The man who vacuum cleaned the Atlantic' - the aerosol collector and Gunnar Erdtman's attempts to measure pollen rain. Article number 2260437, 16 pp.

8. Karami, S. and Ranjbar, M. Pollen morphology of *Matthiola* and the related genus *Dvorakia* (Brassicaceae) in Iran. Article number 2260457, 21 pp.

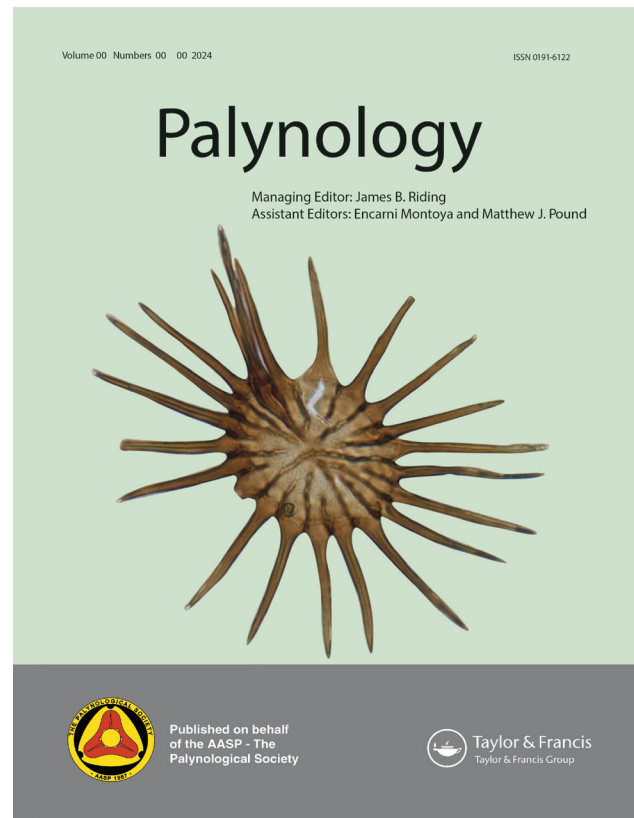
9. Pereira Coutinho, A., Ortiz, S., Cordeiro, D., Serrano, M. and Zuzarte, M. Palynotaxonomy of the subtribe Anisopappinae (Athroismeae, Asteraceae) and the genus *Duhaldea* (Inuleae, Asteraceae) based on their exine ultrastructure. Article number 2261997, 9 pp.

10. Khan, A., Ahmad, M., Sultan, A., Ullah, Z., Majeed, K., Ullah, T. and Zafar, M. Contribution to the pollen morphology of *Astragalus* L. section *Aegacantha* Bunge (Galegeae, Fabaceae) and its systematic significance. Article number 2264352, 14 pp.

11. Martins, T.R.B., Souza-Souza, R.M.B., Leite, W.P., Esteves, R.L., Mendonça, C.B.F. and Gonçalves-Esteves, V. Palynotaxonomy of species of *Dendrophorbium* (Asteraceae: Senecioneae) occurring in Brazil. Article number 2262530, 12 pp.

12. Flores, F.F., Lupo, L.C. and Hilgert, N.I. Outstanding botanical resources for *Plebeia mansita* (Apidae, Meliponini) in the Northern Argentine Yungas: botanical characterization of its honey and main nesting substrates. Article number 2266487, 14 pp.

(175 pages)



# Awards Committee News

By Marie Thomas

## Society Awards Nominations for 2024

AASP–The Palynological Society has several awards that recognize outstanding service to the Society or to the discipline of palynology.

The basic nomination procedure is similar for most awards (main letter of nomination accompanied by letters of support, which include documentation of the accomplishment). Details of the procedures for each award can be found at <https://palynology.org/student-support/professional-awards/award-procedures/>.

The deadline for submission of society awards nominations has been extended to **April 1, 2024**. A complete list of previous winners can be found on the third page of this newsletter.

### Distinguished Service Award

This award recognizes individuals who have generously supported the AASP–TPS with their work and resources over several years, and whose efforts have advanced the Society. Typically, recipients have held society office, participated in committees, or dealt with publications or meetings. There have been twenty recipients of this award, most recently Jen O’Keefe in 2023.

### Honorary Life Membership

This is the oldest AASP–TPS award, with the first awards dating to 1975. This award is either bestowed upon individuals who have made a fundamental contribution to the discipline of palynology, or to people who have given devoted service to the AASP–TPS (or both). Honorary Life Membership has been awarded to seventeen individuals, most recently to George Hart in 2020.

### Medal for Excellence in Education

This medal recognizes leaders in palynological education. Nominees are expected to have considerable experience and accomplishment in aspects of academic education involving palynology. The medal has been awarded six times, most recently to Francisca Oboh-Ikue-nobe in 2023.

### Medal for Scientific Excellence

The Society’s highest award for achievement in the science of palynology is the Medal for Scientific Excellence. The official description lists “fundamental contributions to the development of the science of palynology” as the main criterion. Recipients should have a substantial research history in the field. The medal has been awarded fourteen times in the history of the Society, with the most recent to Dr. Robert Fensome in November, 2023. AASP-TPS will officially present Dr. Fensome his medal at the 56th Annual Meeting in Montpellier, France, after which a detailed write-up of his award and biography will be included in the newsletter.

### Medal for Scientific Merit and Outstanding Promise

This newly established award recognizes individuals in their mid-career who have made important contributions to the science of palynology and who show the promise of continued excellence in the discipline. Typically, nominees will have no more than 15 years’ experience beyond their M.Sc. or Ph.D. graduation (excluding time spent in industry or on leave).



# Student Research Awards 2024

## Call for Applications

AASP–The Palynological Society is pleased to announce its program of Student Research Awards. **For 2024, there will be two awards of \$3000 (US) each**, to support research in any area of palynology. Student Research Awards are to be used for costs directly connected to carrying out research, such as fieldwork and laboratory expenses, but not for travel expenses to attend a meeting. Typically, these awards are provided to students in the preliminary stages of their doctoral research, but MSc. and advanced undergraduate students may also apply.

**Basis of awards:** The qualification of the student, the novelty and imagination of the proposed project, and the likelihood of significant contribution to the science of palynology are factors that will be weighed in the selection process.

## Application procedure

The application form can be downloaded from this webpage:

<https://palynology.org/student-support/student-awards/student-research-grants/>

**Part A** of this form is to be completed by the student, and **Part B** by the student's faculty supervisor. **Applications must be accompanied by a photograph of the student** (.jpeg format) for publication in the society's newsletter.

Additional material will not be considered.

**The applicant's supervisor must submit both parts A and B** of the form to the Awards Committee Chair, either as Word document or as a PDF:

Dr. Marie L. Thomas  
AASP–TPS Awards Committee Chair  
aaspawards@gmail.com

Please ensure that you have completed both parts A and B of this application form. The deadline for applications is **April 15, 2024**. Late or incomplete applications, as well as those that exceed the stated word limits in sections A or B will be disqualified.

As per society awards policy **only students who are registered AASP–TPS members are eligible to apply** (<https://palynology.org/join/#join>). Applications from non-members will not be accepted.

## Undergraduate Student Awards

To support the teaching of palynology at the undergraduate level and to encourage and reward student achievement, AASP–The Palynological Society offers **the Undergraduate Student Award**. Each award consists of **one year's free membership to the Society**. This free membership includes access to digital issues of the Society's publications, the journal *Palynology*, and the quarterly newsletter; discounted registration fees at Society meetings; and eligibility for Society awards.

The awards are made annually to students nominated by faculty members teaching courses with significant palynological content. One student with meritorious achievement in some aspect of the course can be nominated per year, per institution.

The following institutions have **approved courses** from which undergraduate students may be selected: University of Southampton, Louisiana State University, University of Tennessee-Knoxville, University of Portsmouth and Morehead State University.

Additionally, course instructors who are members in good standing of AASP–TPS, and who teach an appropriate course, may nominate their course using the Registration Format found below. This should be cut-and-pasted into a word document and sent to the Awards Committee Chair at: [aaspawards@gmail.com](mailto:aaspawards@gmail.com)

Upon course approval, instructors may nominate a student to receive the award by sending the name, institutional address, and email address of the recipient to the Awards Committee Chair and Society Secretary ([s.stukins@nhm.ac.uk](mailto:s.stukins@nhm.ac.uk)) at any time of the year. Additionally, faculty must send the name of the winner, a paragraph about their achievements, and a photograph to the newsletter editor ([aaspnews@gmail.com](mailto:aaspnews@gmail.com)) for inclusion in the March (awards between July and December) or June newsletter (awards between January and June) each year.

### Undergraduate Student Award, Course Registration Form

- Nominating faculty member:
- University/Higher Education Institution:
- Course Name:
- Course Description and level:
- Average number of students registered in the course annually:
- Number of hours of palynological instruction:
- Criteria used to determine the winning student:
- Date:

Congratulations to **Josie Pallister**, an undergraduate student at the **University of Portsmouth**, for winning an Undergraduate Student Award in August 2023! She was nominated by Dr. Anthony Butcher for receiving the highest marks in her coursework assessment based upon palynofacies analysis of Eocene strata.

# Student Travel Award – 56th Annual Meeting, Montpellier, France 2024

AASP–The Palynological Society is pleased to announce its Student Travel Awards program for 2024. These awards are designed to support travel for student members who intend to present a talk or poster at the 56th annual meeting of AASP - The Palynology Society in Montpellier, France.

## Application procedure:

The application form can be downloaded from this webpage: <https://palynology.org/student-support/student-awards/student-travel-awards/>

**Part A** of this form is to be completed by the student, and **Part B** by the student's faculty supervisor. Applications must be accompanied by a photograph of the student (.jpeg format) for publication in the society's newsletter.

**The applicant's supervisor must submit both parts A and B** of the form to the Awards Committee Chair, either as Word document or as a PDF:

Dr. Marie L. Thomas  
AASP–TPS Awards Committee Chair  
[aaspawards@gmail.com](mailto:aaspawards@gmail.com)

Please ensure that you have completed both parts A and B of the application form.

The deadline for applications is **March 31, 2024**. Late or incomplete applications will not be considered. As per society awards policy, **only students who are registered AASP–TPS members are eligible to apply** (<https://palynology.org/join/#join>). Applications from non-members will not be accepted.



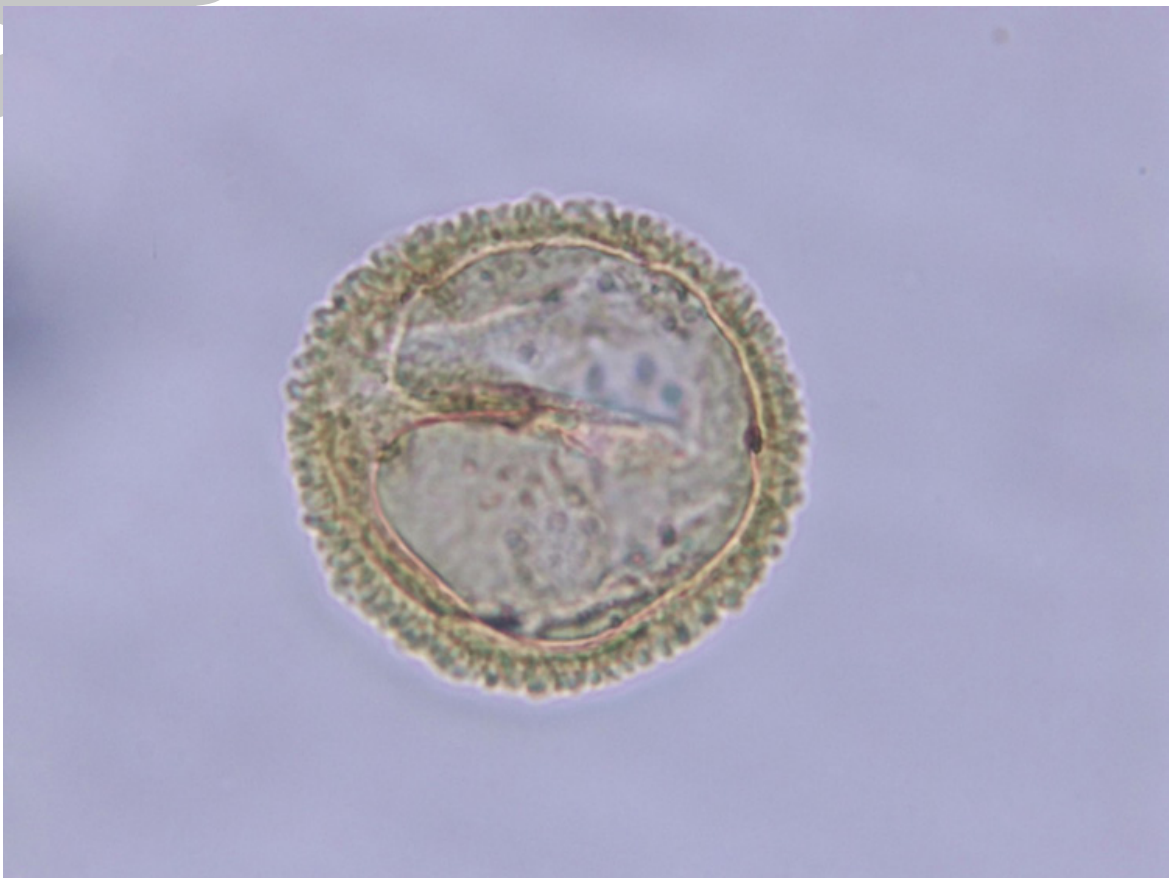
# What's this palynomorph?

In the December 2021 issue of the Newsletter (Vol. 54, Nr.4), we launched a new segment "What's this palynomorph?" where our readers can submit pictures of unidentified palynomorphs to share with the AASP-TPS community. I hope in this way we can downsize the Palynomorph spp. group and foster collaboration between palynologists across the stratigraphic column. Below, you will find the first submissions!

If you recognise any of the palynomorphs in the pictures below, or have a 'golden tip' that could lead to their correct identification, please don't hesitate and submit your suggestions to [aaspnews@gmail.com](mailto:aaspnews@gmail.com) entitled "Mystery Palynomorph" and clearly indicate which Palynomorph sp. you are providing information for. We will pass on the information to the authors of the images to initiate discussions.

This month, **Onema Adojoh** from the Department of Natural Sciences at Northwest Missouri State University sent the following message and microphotograph.

"Please, we recently found the pollen below from one of our samples obtained from Lake Erie (about 10 ka) but do not know the name. I have sent it to a few pollen experts but they could not identify it. Is there a way you could share this AASP/TPS platform or help us find out what it is, please?"



# Publish in the AASP Contribution Series!

By Rob Fensome

The Contributions Series is published by the AASP Foundation to accommodate longer monographic works and significant bibliographic/reference works that are important to palynology.

The first contribution, published in 1970, was **George Hart's A Bibliographic File for Computer Analysis of Permian Palynological Data (1933-1969)**. To date over 50 contributions have been published (some in multiple parts), with topics including melissopalynology (no. 30), megaspores (no. 24), and a modern tree pollen atlas (no. 14), as well fossil miospores (e.g. no. 44) and dinoflagellates (e.g. no. 36). Number 50 is the most recent edition of The Lentin and Williams Index of Fossil Dinoflagellates.

Articles in the Series tend to be (but emphatically not restricted to) review- or catalogue-style articles that can be difficult to publish elsewhere; manuscript submissions longer than regular journal articles are welcome and encouraged.

Although not (yet) included in scholastic impact factors, all new contributions will be distributed digitally and readily available (in contrast to some monograph series out there) at reasonable prices; open access can be negotiated. All proceeds go to the non-profit AASP Foundation and used, for example, to fund scholarships. Manuscripts will be peer revised and professionally edited.

So if you are looking to publish a review-style or longer than usual manuscript, please consider submitting it to the AASP Contribution Series. For other information or make a submission, contact Rob Fensome ([rob.fensome@nrca-nrcan.gc.ca](mailto:rob.fensome@nrca-nrcan.gc.ca)) or Jen O'Keefe ([palynologylexington@gmail.com](mailto:palynologylexington@gmail.com)).



# Upcoming Meeting



LEVERHULME  
TRUST



## Ecological uniformitarianism — help or hindrance to palaeoecology, palaeoclimatology and conservation biology?

### Date:

2–3 July 2024

### Location:

Remote via Zoom

### Hosted by:

The Palaeontological Association

### Registration fee:

£20 (£25 after 7<sup>th</sup> June 2024)

Free for participants from low and lower-middle income countries

### Organised by:

A.L.A. Johnson and J.-F. Cudennec  
(University of Derby)

E.M. Harper  
(University of Cambridge)

J.A.I. Hennissen  
(British Geological Survey)

R.J. Twitchett and T.S. White  
(Natural History Museum, London)

### Meeting website:

[www.palass.org/meetings-events/  
ecological-uniformitarianism](http://www.palass.org/meetings-events/ecological-uniformitarianism)

### General Contact:

[Ecologicaluniformitarianism  
@palass.org](mailto:Ecologicaluniformitarianism@palass.org)

### Invited speakers:

Paolo Albano (Anton Dohrn Zoological Station, Naples)

Joanne Bennett (Australian National University)

Kate Britton (University of Aberdeen)

Jean-François Cudennec (University of Derby)

Greg Dietl (Cornell University)

Harry Dowsett (US Geological Survey)

David Horne (Queen Mary, University of London)

Bruce Lieberman (University of Kansas)

Sierra Petersen (University of Michigan)

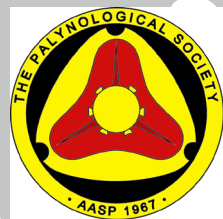
Lynn Wingard (US Geological Survey)

Following the success of a pump-priming event in 2022 (Ecological uniformitarianism – key or lock?), this online meeting will reunite a diverse community of Earth and Life Scientists to discuss the stability of ecological niches. Earth scientists have long taken the (pseudo-) uniformitarian view that niches are stable and hence that the environments of fossil organisms can be interpreted from the ecology of modern counterparts. Niche change is, however, demonstrated by many invasive species. Whether niches are stable or labile has major implications not only for interpreting past environments but also for predicting future communities in the face of ongoing climate and other environmental change.

### We invite offers of talks (deadline 29 March 2024)

concerning niche stability/labability over various taxa and timescales to complement invited lectures from a set of prestigious speakers. Publication of the proceedings is planned as an online special issue of the Association's journals.

# AASP FOUNDATION CENTURY CLUB



## What?

The Century Club of the American Association of Stratigraphic Palynologists Foundation is an organization founded by the Trustees of the Foundation in order to provide persons with the opportunity to support activities of the AASP Foundation.

## Why?

1. To develop an established level of giving that will continue to provide a solid financial base for the Foundation.
2. To provide unrestricted funds to support the various publishing activities of the Foundation.
3. To provide a meaningful organization and method of recognition of dedicated "friends" of the AASP Foundation.

## How?

Your tax-deductible contribution of \$100 or more to the AASP Foundation entitles you to belong to the Century Club. The 2023. "membership" drive is on now. Your contribution may be made by personal check or by a pledge which is **payable on or before December 31, 2024.**

## Join!

To join the Century Club, simply complete the attached Contribution/Pledge Form and mail to the address listed below.

The AASP Foundation is a 501 (c)(3) not-for-profit, public organization registered in the United States. This means that contributions to the AASP Foundation are fully deductible on your U.S. Federal Income Tax return. Also, many employers have a matching gift program whereby they match your personal gift to not-for-profit organizations. It is well worth the effort to explore this possibility concerning your gift to the AASP Foundation.

## 2024 AASP Foundation Century Club Contribution Form

Mail to: Thomas D. Demchuck  
AASP Foundation Chair and Trustee  
14419 Lotusbriar Ln.  
Houston, TX 77077

Name: \_\_\_\_\_

Address: \_\_\_\_\_

Contribution Enclosed: \$\_\_\_\_\_ I wish to pledge: \$\_\_\_\_\_