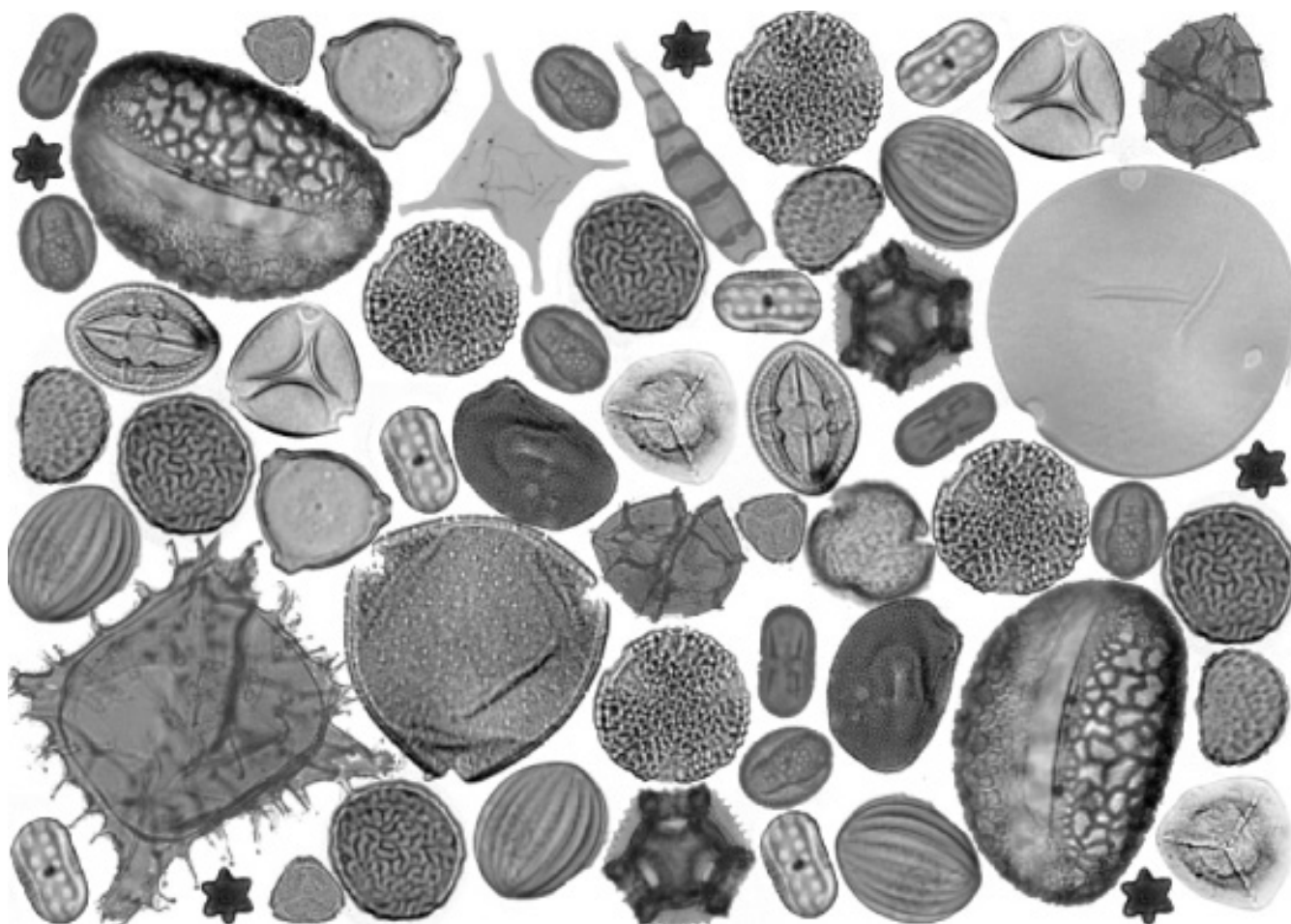




# **AASP – The Palynological Society**

Promoting the Scientific Understanding of Palynology since 1967



# NEWSLETTER

March 2020  
Volume 53, Number 1

Published Quarterly



# AASP – TPS NEWSLETTER

Published Quarterly by AASP – The Palynological Society

March 2020, Volume 53, Number 1

## CONTENTS

- Page 3** | List of AASP – TPS awardees
- Page 4** | Board of Directors and upcoming deadlines
- Page 5** | A Message from our President
- Page 6** | Managing Editor's Report
- Page 7** | New Publication...
- Page 8** | AASP – TPS Annual Meeting 2020: Deadlines Approaching!
- Page 10** | AASP – TPS 50th Anniversary Jewelry Collection
- Page 11** | AASP - TPS Awards
- Page 13** | In Memoriam...
- Page 17** | News from...
- Page 20** | Other News
- Page 22** | Call to Serve - Newsletter open positions
- Page 23** | AASP Foundation Century Club
- Page 24** | Upcoming AASP – TPS Meetings
- Page 25** | 53rd AASP – TPS Annual Meeting
- Page 30** | 54th AASP – TPS Annual Meeting
- Page 34** | Other Meetings and Workshops of Interest



# AASP

The Palynological Society

The American Association of Stratigraphic Palynologists, Inc. - AASP – The Palynological Society - was established in 1967 by a group of 31 founding members to promote the science of palynology. Today AASP has a world-wide membership of about 800 and is run by an executive comprising an elected Board of Directors and subsidiary boards and committees. AASP welcomes new members.

The AASP Foundation publishes the journal *Palynology* (quarterly), the AASP Newsletter (quarterly), and the AASP Contributions Series (mostly monographs, issued irregularly), as well as several books and miscellaneous items. AASP organises an Annual Meeting which usually includes a field trip, a business luncheon, social events, and technical sessions where research results are presented on all aspects of palynology.

## **AASP Scientific Medal recipients**

Professor William R. Evitt (awarded 1982)  
Professor William G. Chaloner (awarded 1984)  
Dr. Lewis E. Stover (awarded 1988)  
Dr. Graham Lee Williams (awarded 1996)  
Dr. Hans Gocht (awarded 1996)  
Professor Svein B. Manum (awarded 2002)  
Professor Barrie Dale (awarded 2004)  
Dr. David Wall (awarded 2004)  
Dr. Robin Helby (awarded 2005)  
Dr. Satish K. Srivastava (awarded 2006)  
Professor Estella B. Leopold (awarded 2013)  
Professor Vaughn M. Bryant (awarded 2016)  
Professor David Batten (awarded 2018)

## **AASP Honorary Members**

Professor Dr. Alfred Eisenack (elected 1975)  
Dr. William S. Hoffmeister (elected 1975)  
Professor Leonard R. Wilson (elected 1975)  
Professor Knut Faegri (elected 1977)  
Professor Charles Downie (elected 1982)  
Professor William R. Evitt (elected 1989)  
Professor Lucy M. Cranwell (elected 1989)  
Dr. Tamara F. Vozzhennikova (elected 1990)  
Professor Aural T. Cross (elected 1991)  
Dr. Robert T. Clarke (awarded 2002)  
Professor Vaughn Bryant (awarded 2005)  
Professor Alfred Traverse (awarded 2005)  
Professor Bernard Owens (awarded 2011)  
Dr. John E. Williams (awarded 2013)  
Mr. Paul W. Nygreen (awarded 2013)  
Professor Norman Norton (awarded 2016)

## **AASP Board of Directors Award recipient**

Dr. Robert T. Clarke (awarded 1994)  
Dr. Thomas D. Demchuk (awarded 2014)

## **Teaching medal recipients**

Professor Aural T. Cross (awarded 1999)  
Professor Alfred Traverse (awarded 2001)  
Professor Bill Evitt (awarded 2006)  
Professor Vaughn M. Bryant (awarded 2013)  
Professor Geoffrey Clayton (awarded 2016)

## **AASP Distinguished Service Award recipients**

Dr. Robert T. Clarke (awarded 1978)  
Dr. Norman J. Norton (awarded 1978)  
Dr. Jack D. Burgess (awarded 1982)  
Dr. Richard W. Hedlund (awarded 1982)  
Dr. John A. Clendening (awarded 1987)  
Dr. Kenneth M. Piel (awarded 1990)  
Dr. Gordon D. Wood (awarded 1993)  
Dr. Jan Jansonius (awarded 1995)  
Dr. D. Colin McGregor (awarded 1995)  
Professor John H. Wrenn (awarded 1998)  
Professor Vaughn M. Bryant (awarded 1999)  
Dr. Donald W. Engelhardt (awarded 2000)  
Dr. David T. Pocknall (awarded 2005)  
Dr. David K. Goodman (awarded 2005)  
Professor Owen K. Davis (awarded 2005)  
Dr. Thomas Demchuk (awarded 2009)  
Professor Reed Wicander (awarded 2014)  
Professor Fredrick Rich (awarded 2016)  
Dr. James B. Riding (awarded 2016)  
Professor Martin B. Farley (awarded 2019)



# AASP – TPS NEWSLETTER

Published Quarterly by AASP – The Palynological Society

March 2020  
ISSN 0732-6041

Volume 53, Number 1  
Gilda Lopes, Editor

---

## BOARD OF DIRECTORS

President  
Past-President  
Secretary  
Treasurer  
Managing Editor  
Webmaster  
Newsletter Editor  
Directors at Large

Katrin Ruckwied – 2019 - 2021  
Gunn Mangerud – 2019 - 2020  
Stephen Stukins – 2018 - 2019  
Rebecca Hackworth – 2018 - 2019  
James Riding – 2018-2019  
Fabienne Marret  
Gilda Lopes  
Sofie Lindström – 2018 - 2020  
Kimberley Bell – 2019 - 2021  
Julia Gravendyck – 2018 - 2020

## AASP NEWSLETTER CORRESPONDENTS

Kasia K. Śliwińska  
– *Currently Vacant* –  
Ingrid Romero Valero and V.A. Korasidis  
Nivedita Mehrotra  
Peta Mudie and Elena Marinova  
Philippe Steemans  
Stephen Louwye  
Annette Götz  
Tuba Aydin Ozbek  
A. Wheeler and J.J. Cooling  
Andres Pardo Trujillo

Nordic Countries  
United Kingdom  
United States  
India  
Black Sea region  
French-speaking Belgium  
Flemish-speaking Belgium  
South Africa  
Asia  
Australia  
South America

## AASP BOOK REVIEW EDITOR

– *Currently Vacant* –

To express interest in open correspondent positions, please send an email to:  
[aaspnews@gmail.com](mailto:aaspnews@gmail.com)

## AASP WEBMASTER

Fabienne Marret, [aaspwebmaster@gmail.com](mailto:aaspwebmaster@gmail.com), website: <http://www.palynology.org>

## AASP NEWSLETTER EDITOR

Gilda Lopes, [aaspnews@gmail.com](mailto:aaspnews@gmail.com), Faro, Portugal

## AASP NEWSLETTER GRAPHIC DESIGN (March 2020 Issue)

Filipe Barreira, Laboratório Nacional de Energia e Geologia (LNEG), S. Mamede Infesta, Portugal

The AASP – TPS Newsletter is published four times annually. Members are encouraged to submit articles, “letters to the editor,” technical notes, meetings reports, information about “members in the news,” new websites and information about job openings. Every effort will be made to publish all information received from our membership. Contributions which include photographs should be submitted two weeks before the deadline.

**Deadline for submission for the next issue of the newsletter is May 15.** All information should be sent by email. If possible, please illustrate your contribution with art, line drawings, eye-catching logos, black & white photos, colour photos, etc. **We DO look forward to contributions from our members.**



# A Message From Our President



Photo: Katrin Ruckwied, AASP - TPS President

Dear colleagues and friends,

I hope you had a good start into the new decade! The AASP board had a very early Mid-Year meeting on December 20th 2019 at the Natural History Museum in London and I would like to thank all my colleagues who participated so short before Christmas. Two of the main discussion points were the upcoming meetings in Baton Rouge and Manizales and the elections of the AASP board. The meeting in Baton Rouge will be happening very soon (May 26th to 30th) and Sophie Warny is doing a wonderful job with

the organization. For those of you who haven't registered, yet: Hurry up and take advantage of the free Conference Dinner for the first 80 registrants, there are only a few seats left! The dates for our 2021 Meeting are confirmed as August 8th to 12th. This will be the first AASP Meeting in Colombia and we are very excited to have the opportunity to meet and collaborate with many of our South American colleagues. Save the date!

As you have seen in the December newsletter and your election notification, there is only one candidate for most advertised positions on the AASP committee. It was quite difficult to find people who were willing to run for election and I personally find this concerning. If you are interested in being a more active member, please feel free to contact me or any other board member. We are happy to answer questions about the work on the board and hope that we will be able to attract more candidates in the future. By the way, did you know that board members are able to get a 1000 Dollar travel grant annually to participate in the meetings? Elections for this year are over and the results will be out soon, but next year we are counting on you as a candidate!

Best regards,

Katrin



# Managing Editor's Report

The first part of Volume 44 of *Palynology* was published online in early February 2020; it comprises a brief editorial and 10 research papers on a wide range of topics. The contents of Volume 44, Part 1 are reproduced below. It will be printed and distributed to members, together with Part 2, during May 2020. This year's cover is purple, and features a rather photogenic Miocene fungal fruiting body from the UK (see <https://www.tandfonline.com/toc/tpal20/current>). As has been the case for the past several years, manuscript submission rates are very good and we have a healthy (but not too large) backlog of papers awaiting assignment to a volume/part.

In other news, the latest *Lentin and Williams Index of Fossil Dinoflagellates* was published online by the *Contributions Series* late in 2019. This latest iteration of this long-running serial publication by Rob Fensome and his colleagues in Canada will not be printed (it is 1173 pages long!). The pdf file of *Contributions Series Number 50* can be freely downloaded from the AASP website. Go to: <https://palynology.org/contribution-series-number-50-the-new-lentin-and-williams-index-2019/>.

Our Production Editor at Taylor and Francis, Josie Brown, is currently on maternity leave (she had a baby boy around Christmas). Her position will be covered by Francesca Hearn, who can be contacted at [francesca.hearn@tandf.co.uk](mailto:francesca.hearn@tandf.co.uk).

James B. Riding

Managing Editor, AASP – The Palynological Society

British Geological Survey

Keyworth

Nottingham NG12 5GG

United Kingdom

Tel: +44 (0)115 9363447

E-mail: [jbri@bgs.ac.uk](mailto:jbri@bgs.ac.uk)

11th February 2020

## The contents of *Palynology* Volume 44, Part 1

(February 2020)

1. Riding, J.B. Editorial. Literature compilations in palynology are not simply tedious lists. 1–3.
2. Zhang, Z.Y., Yang, F.C., Cheng, D.M., Ferguson, D.K., Hu, W., Li, Y.Z. and Li, C.S. Comparison between two kinds of natural pollen traps in tropical China: ants' nests on tree branches versus surface soil. 4–11.
3. Taylor, A., Hutson, J.M., Bryant, V.M. and Jenkins, D.L. Dietary items in Early to Late Holocene human coprolites from Paisley Caves, Oregon, USA. 12–23.
4. Dolby, G. Brackish and marginal marine phytoplankton from the Athabasca Oil Sands (Lower Cretaceous) of north-east Alberta, Canada. 24–31.
5. Fontes, D., Jaramillo, C. and Moreno, J.E. Pollen morphology of the Amacayacu Forest dynamics plot, Western Amazon, Colombia. 32–79.
6. Gurdebeke, P.K., Mertens, K.N., Pospelova, V., Van Nieuwenhove, N. and Louwye, S. *Islandinium pacificum* sp. nov., a new dinoflagellate cyst from the upper Quaternary of the northeast Pacific. 80–93.

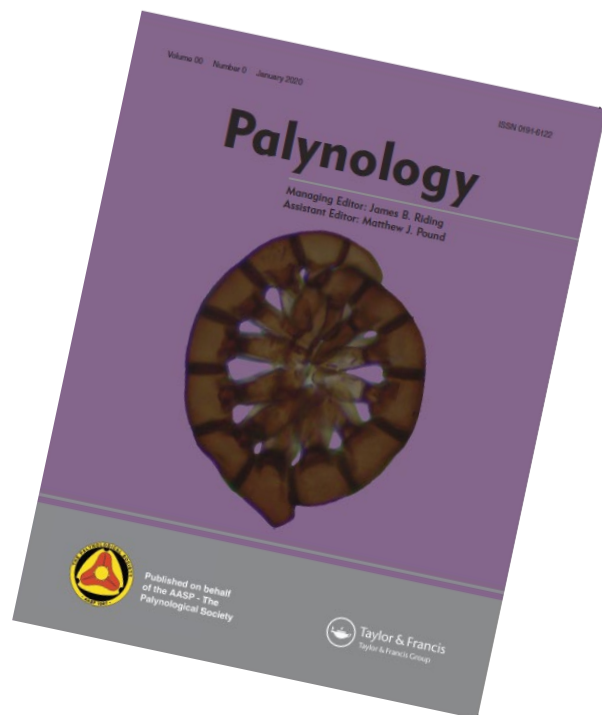
7. Aboul Ela, N.M., Tahoun, S.S. and Raafat, A. The Cretaceous (Barremian–Maastrichtian) palynostratigraphy and palynofacies of the Drazia-1 well, North Egypt. 94–113.

8. Layek, U., Manna, S.S. and Karmakar, P. Pollen foraging behaviour of honey bee (*Apis mellifera* L.) in southern West Bengal, India. 114–126.

9. Riding, J.B., Scott, A.C. and Collinson, M.E. A biography and obituary of William G. Chaloner FRS (1928–2016). 127–166.

10. Mansour, A., Tahoun, S.S., Gentzis, T. and Elewa, A.M.T. The marine palynology of the Upper Cretaceous Abu Roash 'A' Member in the BED 2-3 borehole, Abu Gharadig Basin, Egypt. 167–186.

11. Lattar, E.C., Bóbeda, G. and Zini, L.M. Pollen morphological and morphometric analysis in species of the Aeschynomeneae and Adesmieae tribes (Fabaceae: Fabaceae). 187–194.



## New Publication...

### NEW VERSION OF THE LENTIN AND WILLIAMS INDEX PUBLISHED, AND DINOFLAJ4

By Rob Fensome, Graham Williams, and Andrew MacRae

The 2019 edition of the Lentin and Williams Index was published as *AASP Contributions Series no. 50* in late 2019. The main part of the Index now has 672 generic and 4,536 specific “correct” names, and includes in total 10,233 entries, including 338 that are new. There are 2,112 references in total, of which 73 are new to the Index. Proposals in this edition include: one new name and nine new combinations. The 2019 Index is a digital publication and can be downloaded for free at <https://palynology.org/contribution-series-number-50-the-new-lentin-and-williams-index-2019/>.

A parallel version of the database DINOFLAJ, (pronounced to rhyme with the English word “badge”) will reflect the 2019 Index, with entries reflecting those in the latter except that nomenclatural novelties will be recorded as accomplished, not new. DINOFLAJ4, as its predecessors, will also include a suprageneric component, although this has not been updated. We hope to be in a position to revise this aspect of the database in the future. At the time of writing (mid-February 2020), DINOFLAJ4 has not been released, but will be available soon. In the meantime, the URL <http://dinoflaj.smu.ca/dinoflaj4/> will lead you to DINOFLAJ3. Until the release of DINOFLAJ4, please use the 2019 Index for up-to-date taxonomy and nomenclature.

In the Index/DINOFLAJ, the taxonomy reflects our biases, but the detailed cross-referencing provides appropriate information for those

who do not necessarily agree with the current entries. Both the Index and DINOFLAJ provide summaries of the latest *International Code of Nomenclature for algae, fungi, and plants*, with dinoflagellate-related examples and a discussion of current issues, with references.

We are very grateful to those who have brought

our attention to glitches and/or provided us with publications containing new taxonomy. We request that anyone who has such information send it to Rob (rob.fensome@canada.ca). Our plan is to produce updated versions every two to three years: so far we are on schedule.

## AASP – TPS Annual Meeting 2020

### Deadlines approaching!

This year AASP – TPS Annual Meeting is taking place in Baton Rouge, Louisiana, USA.

Find below some important deadlines and instructions. Don't forget to register at the following link:

<https://palynology.org/53rd-annual-meeting-aasp-the-palynological-society-baton-rouge-louisiana-usa-may-26th-30th-2020/>

In the webpage you will also find all the information you need about this conference.

Abstracts must be submitted before **March 31<sup>st</sup>, 2020.**

#### Conference basic cost:

	Early Bird (before March 16 <sup>th</sup> )	Regular (March 16 <sup>th</sup> onwards)
<b>Student member</b>	\$250	\$305
<b>Student non-member</b>	\$280	\$335
<b>Professional member</b>	\$350	\$390
<b>Professional non-member</b>	\$390	\$445

And just for you, please take a look at the preliminary schedule in the next page. It looks amazing!

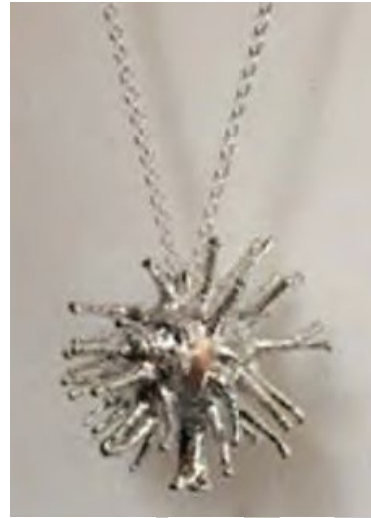




# AASP – TPS 50th Anniversary Jewelry Collection

**Exclusive, Custom-made 50th Anniversary Jewelry**

**Limited-Edition and availability**



Special thanks to John Firth and Ingrid Romero for palynomorph images.

Celebrate the 50th anniversary of AASP – The Palynological Society with a beautiful, sterling silver palynomorph necklace. The Society board worked with jeweler and designer, 'Science-inspired jewelry', to create these one-of-a-kind, unique necklaces in honor of our silver anniversary. There are a limited number available of two designs, a dinoflagellate cyst of *Diphyes recurvatum* and a pollen grain of *Macrolobium multijugum*. They are sterling silver and each measure c.3/4" diameter.

Each necklace comes with a commemorative information card that includes a picture and description of the palynomorph. The society is selling them for \$150.00 (for members) and \$170.00 (for non-members). This is a wonderful way to support AASP and is a great conversation starter!

Payment can be made to the AASP Paypal account, [thomasdd98@yahoo.com](mailto:thomasdd98@yahoo.com) or check can be mailed to Treasurer, Rebecca Hackworth, 1030 East 14th Street, Houston, TX 77009. Necklaces can be mailed at your request.

# AASP – TPS Awards

## Niall W. Paterson

Awards Committee Chairman

AASP – The Palynological Society has several awards that recognize outstanding service to the society or to the discipline of palynology.

The basic nomination procedure is similar for most awards and can be found at <https://palynology.org/award-procedures/>

The deadline for submission of society awards nominations is **March 1** of each year.

## Medal for Scientific Excellence

This is the society's highest award and has primarily been bestowed upon individuals who have made fundamental contributions to the development of the discipline of palynology. Recipients should have a substantial research record in the field. The medal has been awarded thirteen times in the history of the Society, most recently to David Batten in 2018.

## Medal for Scientific Merit and Outstanding Promise

This newly established award recognizes individuals in their mid-career who have made important contributions to the science of palynology, and who show the promise of continued excellence in the discipline. Typically, nominees will have no more than 15 years' experience beyond their MSc or PhD graduation (excluding time spent in industry or on leave).

## Distinguished Service Award

This award recognizes individuals who have generously supported the AASP – TPS with their work and resources over several years, and whose efforts have advanced the society. Typically, recipients have held society office,

participated in committees, or dealt with publications or meetings. There have been twenty recipients of this award, most recently Martin Farley in 2019.

## Medal for Excellence in Education

This medal recognizes leaders in palynological education. Nominees are expected to have considerable experience and accomplishment in aspects of academic education involving palynology. The medal has been awarded five times, most recently to Geoff Clayton in 2016.

## Honorary Life Membership

This is the oldest AASP – TPS award, with the first awards dating to 1975. Honorary Life Membership is either bestowed upon individuals who have made a fundamental contribution to the discipline of palynology, or to people who have given devoted service to the AASP – TPS (or both). These may be persons who are not members of the society. Honorary Life Membership has been awarded to sixteen individuals, most recently to Norm Norton in 2016.

---

## AASP – TPS Student Research Awards, 2020

### FINAL CALL

AASP – The Palynological Society is pleased to announce its program of Student Research Awards. For 2020, there will be two awards of \$3000 (US) each, to support research in any area of palynology. Student Research Awards are to be used for costs directly connected

to carrying out research, such as fieldwork and laboratory expenses, but not for travel expenses to attend a meeting. Typically, these awards are provided to students in the preliminary stages of their doctoral research, but MSc. and advanced undergraduate students may also apply.

Basis of awards: The qualification of the student, the novelty and imagination of the proposed project, and the likelihood of significant contribution to the science of palynology are factors that will be weighed in the selection process.

### Application procedure:

Please download the application form: <https://palynology.org/student-research-grants/>

**Part A** of this form is to be completed by the student, and **Part B** by the student's faculty supervisor. Applications **must** be accompanied by a photograph of the student (jpeg format) for publication in the society's newsletter.

Additional material will not be considered.

The applicant's supervisor must submit both parts A and B of the form to the Awards Committee Chair, either as Word document or as a PDF:

Dr. Niall W. Paterson  
AASP-TPS Awards Committee Chair  
[aaspawards@gmail.com](mailto:aaspawards@gmail.com)

Please ensure that you have completed both parts A and B of this application form.

The deadline for applications is **March 31st, 2020**. Late or incomplete applications, as well as those that exceed the stated word limits in sections A or B will be disqualified. As per society awards policy only students who are registered AASP-TPS members are eligible

to apply (<https://palynology.org/join/#join>). Applications from non-members will not be accepted.

### Advice on preparing an effective Student Research Award application

The single most valuable piece of advice is "know and write to your audience."

You have only a very limited space to describe your project, so use the words wisely. Writing briefly is more difficult than writing at length but is worth the effort. Any literature review should be at a minimum, and the problem you aim to solve through your study should be emphasized. Please remember that the Awards Committee does not know context for your project and may not even have closely related expertise in your particular area of palynology. Thus, it is important to write for a broader audience.

It can be a good idea to show your text to someone who is not a palynologist or involved in the project to see if they understand your description well. The committee encourages projects that integrate palynology with other data; however, it should be clear what palynological work you will be performing. If there is prior palynological work, please explain how your approach is new or different.

---

### Undergraduate Student Awards

In order to support the teaching of palynology at the undergraduate level, and to encourage and reward student achievement, AASP-The Palynological Society offers the Undergraduate Student Award. Each award consists of one year's free membership to the society, which includes digital access to the society's journal *Palynology*, discounted registration fees at

society meetings, and eligibility for society awards.

Undergraduate Student Awards are made annually to students nominated by faculty members teaching courses with significant palynological content. One student recipient, with meritorious achievement in some aspect of the course, can be nominated per year, per institution.

The following institutions have approved courses from which undergraduate students may be selected: University of Southampton, Louisiana State University, University of Tennessee-Knoxville, University of Portsmouth and Morehead State University.

Additionally, course instructors who are members in good standing of AASP-TPS, and who teach an appropriate course, may nominate their course using the registration form below. This should be cut-and-pasted into a word document and sent to the Awards Committee Chair at: [aaspawards@gmail.com](mailto:aaspawards@gmail.com)

Upon course approval, instructors may nominate a student to receive the award (at any time of the year) by sending the name, institutional address, and email address of the recipient to the Awards Committee Chair and to the Society Secretary ([s.stukins@nhm.ac.uk](mailto:s.stukins@nhm.ac.uk)).

Faculty must send the name of the winner, a paragraph about their achievements, and a photograph to the Newsletter Editor ([aaspnews@gmail.com](mailto:aaspnews@gmail.com)) for inclusion in the March (awards between July and December) or June newsletter (awards between January and June).

---

### **Undergraduate Student Award, Course Registration Form**

Nominating faculty member:

University/Higher Education Institution:

Course Name:

Course Description and level:

Average number of students registered in the course annually:

Number of hours of palynological instruction:

Criteria used to determine the winning student:

Date:

---

## **In Memoriam...**

### **Bernard Owens**

**1938–2019**

By Duncan McLean, Jim Riding, and Charles H. Wellman



Bernard receiving his DSc from the University of Sheffield in 1998.

It is with profound regret that we reported the passing of the eminent Palaeozoic palynologist Bernard Owens in the autumn edition of the *Newsletter* (volume 52.3, p. 18). Here we present a brief obituary and account of his life and work. A more comprehensive obituary of Bernard has appeared in the *Review of Palaeobotany and Palynology* (McLean et al. 2020, doi 10.1016/j.revpalbo.2020.104184), and another one will be published shortly in *Palynology*.

## Introduction and overview

Bernard Owens was born in Darlington, County Durham in northeast England in 1938. He obtained a scholarship to Darlington Grammar School where he was heavily influenced by his inspirational geography teachers, George Chapman and Jack Waltham, to seek a career in geology. He was not alone, George and Jack similarly inspired other future palynologists such as Rex Harland, George Hart and John Richardson to study the earth sciences. Bernard took a bachelor's degree in geology at the University of Sheffield, graduating in 1960, and stayed on to become the first PhD student of Roger Neves. His research involved fieldwork in the Pennine Hills in northern England, where he collected material to study the Namurian (Serpukhovian–Bashkirian) palynology of the Stainmore outlier. His thesis was completed in 1963 and the results were published soon afterwards. These data contributed to the subsequent miospore biozonation for the Namurian of northern England, and to the zonal scheme for the Carboniferous of Europe. In 1963, he moved to Ottawa to undertake a postdoc with Colin McGregor of the Geological Survey of Canada on the Devonian miospores of Arctic Canada. He returned to the UK in 1965 to join the Institute of Geological Sciences (IGS) in Leeds as their first ever palynologist. The IGS became the British Geological Survey (BGS), and moved its head office to Nottingham in 1984; Bernard became Manager

of the Biostratigraphy Group soon afterwards. He held this position until his formal retirement in 1998. Immediately prior to retiring from the BGS, Bernard became Director of the Centre for Palynology at the University of Sheffield. The University awarded him an emeritus chair and Bernard remained scientifically active. His final paper was published during 2019, but before his death he completed his contribution to a new miospore biostratigraphy for the Carboniferous of the UK and Ireland.

## Research

Bernard's published output indicates that he aspired to establish Carboniferous miospore zonations across the northern hemisphere, and to provide long-distance correlations between them. Originally he worked with colleagues in Belgium and France, then became involved in research in eastern Europe and Russia, and further afield. Most of these collaborations stemmed from meetings at Carboniferous Congresses and CIMP Conferences. As well as his work on the palynostratigraphy of the Devonian and Carboniferous, Bernard published on the Lower Palaeozoic and on palynological techniques (>90 formal publications). He contributed data to many BGS Geological Sheet Memoirs, and wrote numerous unpublished internal IGS and BGS biostratigraphical reports. Most of these are largely concerned with the biostratigraphy of onshore boreholes. Others are on economic geology, for example coal exploration throughout the UK, oil exploration in the East Midlands, and offshore oil and gas exploration. In addition to formal publications, as part of his role in BGS, Bernard provided industry with major projects on the palynology of the Jurassic and Carboniferous of the onshore and offshore UK. The significance of palynostratigraphy to UK North Sea hydrocarbon exploration was acknowledged by the North Sea '90 conference arranged by Bernard and his colleagues at BGS in Nottingham in 1990. One



of the most significant element of Bernard's career was his enthusiastic and tireless work for three volunteer-run scientific organisations. These are documented in the following three subsections.

### **Subcommission on Carboniferous Stratigraphy (1963–2019)**

Bernard attended the Fifth Carboniferous Congress in Paris in 1963 and so began a lifelong association with the International Union of Geological Sciences Subcommission on Carboniferous Stratigraphy (SCCS). He was a corresponding member from 1984 until his death in 2019. He attended every Carboniferous Congress up until the 15th in the Netherlands in 2003. In the 1960s and 1970s, the Commission Internationale de Microflore du Paléozoïque (CIMP) was a key part of the SCCS, and much of its research related to Carboniferous miospores with alternate CIMP meetings coinciding with each Carboniferous Congress. This was hence a natural arena for Bernard to develop his research activities and collaborations, and he contributed many papers at Carboniferous Congresses over the years. Much of his involvement with the SCCS was in describing boundary stratotypes. Bill Ramsbottom asserted that the UK and Ireland could be taken as a stratotype section for all except the latest Carboniferous, and Bernard provided the palynostratigraphical dimension to the arguments for establishing stratotypes in Britain. He helped organise a symposium on 'Biostratigraphic Data for a Mid-Carboniferous Boundary' in Leeds in 1982, which resulted in the formation of the Mid Carboniferous Boundary Working Group of the SCCS at the 10th Carboniferous Congress in Spain. Bernard became involved in the, ultimately unsuccessful, proposal to place the Mid-Carboniferous boundary in Stonehead Beck, Cowling, in northern England, and he voted against locating the Mid-Carboniferous Boundary in Arrow Canyon, Nevada.

### **Commission Internationale de Microflore du Paléozoïque (1968–2002)**

The Commission Internationale de Microflore du Paléozoïque (CIMP) hold symposia at every Carboniferous Congress. Bernard presented at least one paper at each one of these events. He also attended the intervening CIMP meetings, and helped arrange many of these. Bernard was involved in the CIMP Working Group on Devonian palynology from its inception. CIMP underwent a major reorganisation during the Carboniferous Congress in Germany during 1971, and Bernard was elected as Co-ordinating Secretary of the various stratigraphical and taxonomic subcommissions. Bernard became the absolute mainstay of CIMP. He was already active in several CIMP Working Groups including the Working Groups on *Dictyotriletes* and *Vallatisporites*. During the SCCS meeting in Poland during 1995, Bernard proposed the establishment of a multidisciplinary working group on the definition of the Viséan-Namurian boundary and its global equivalents. The Working Group reported to the CIMP Meeting in France in 2002. He was elected as General Secretary of CIMP in 1978, holding this post until 1983. When Maurice Streel retired as President in 1985, Bernard took over. He stayed as President until 1991, and was re-elected in 1998 and served until 2002.

### **The Micropalaeontological Society (1970–1985)**

Bernard was a founder member of The Micropalaeontological Society (TMS - originally the British Micropalaeontological Group), and was its treasurer from its inception in 1970 until 1972, and secretary from 1970 until 1975. He was president from 1980 until 1982 and edited a special volume of the TMS journal in 1985.

## International CIMP collaborative projects (1980 onwards)

Several CIMP sessions were held at the Fifth International Palynological Conference at Cambridge in 1980. The resultant publication was edited by Bernard in a special volume of the *Review of Palaeobotany and Palynology*. Throughout the early 1980s, Bernard set up and ran a collaborative research project between the palynologists of CIMP, Garyounis University in Libya and the Arabian Gulf Oil Company (AGOCO) to study the Cambrian to Cretaceous biostratigraphy of northeast Libya. AGOCO provided funds and allowed access to well-preserved fossil material. Preliminary results were presented in a special part of the *Journal of Micropalaeontology*, with a follow-up published in a special volume by Garyounis University, both edited by Bernard.

Much of the biostratigraphical age assignments in Libya were achieved by long-distance correlation with northwest Europe. This highlighted a paucity in data in the intervening areas. The CIMP Symposium on Circum-Mediterranean Palynology held in the Netherlands in 1988 attempted to fill this gap. Again, Bernard edited the symposium volume. In 1990, Bernard established a similar collaboration between Saudi Aramco and CIMP to study the Palaeozoic palynostratigraphy of the Arabian Plate. First results of this project were presented at a CIMP symposium at the Eighth International Palynological Congress (IPC) in France in 1992. Subsequently the Saudi Aramco-sponsored sessions became a regular part of all CIMP meetings, and at many larger meetings where CIMP was involved between 1988 and 2019. Bernard continued to encourage publication of the results and he edited three special volumes. Publication of the latest volume is anticipated in 2020. The CIMP industrial cooperations stand out as highly significant contributions to the science of Palaeozoic palynology. As well as serving the operational needs of the funding companies,

they also produced a coherent research group who continue to be able to access some superbly preserved material.

## Honours

Several palynomorphs are named after Bernard, for example *Spelaeotriletes owensii* and *Velumousspora owensii*. Bernard sat on the council of the Yorkshire Geological Society (YGS) and, in 1998, he was awarded the YGS John Phillips Medal to recognise his distinguished contributions to the stratigraphy and palaeontology of northern England. His contribution to palynology was recognised by AASP-TPS by the award of honorary membership at our 44th Annual Meeting in Southampton during 2011.

## Additional activities

Bernard worked with research students throughout his career. When he was at IGS/BGS, he co-supervised the PhD of John Marshall at the University of Bristol. While Director of the Centre for Palynology, at Sheffield, he taught on the MSc Palynology course and supervised several postgraduate students. During his PhD research, Bernard had learned how to produce single-grain slide mounts. He continued to individually pick and mount single specimens during the evenings, and produced many thousands of high-quality reference slides. Many of these were distributed to colleagues, but many are curated at the BGS in the 'Bernard Owens Collection' which form the basis of the Carboniferous miospores in the BGS Taxonomy Online web resource.

Outside palynology, Bernard was a keen gardener and grew superb chrysanthemums and dahlias and played lawn bowls. He met his wife, Pat, while an undergraduate at Sheffield and they married in 1963. They have two children, Graham and Kathryn, and two grandsons upon whom he doted. In his later years Bernard suffered from Parkinson's

Disease which affected him physically but not mentally. This did not suppress his innate enthusiasm and spirit; he continued to publish papers and was active in research on Carboniferous miospores until just weeks before his death. Although the bulk of his published work concerns Carboniferous miospores, it is clear that he was a major force in the world of palynology more widely, specifically being a very effective instigator and facilitator of international collaborations.

## News from...

### India

By Nivedita Mehrotra

The year 2019 was a year packed with many international meetings, symposia, and workshops that were held in India. I had the chance to participate in a few, but also gathered information about the other events. The PAGES LandCover6K group workshop entitled "Holocene land cover and land use in South and Southeast Asia for climate modeling" was held at the French Institute of Pondicherry, India, between September 11th-14th, 2019. It encompassed various aspects of Past Land Cover and Land use changes in South and Southeast Asia. Workshops on land cover reconstructions and archaeology-based land-use mapping using pollen-vegetation modeling methods and fieldwork protocols (Krishnamurthy et al., 2019) were also provided for early career researchers. Participants were given hands-on experience in the establishment of standard chronologies of pollen records, based on radiocarbon dating and Bayesian modeling. As a participant in this workshop, I had the opportunity to learn the details and protocols of several techniques that can be

used for the determination of land cover change estimations in the tropical vegetation of India and similar landscapes. There were interesting poster presentations by the participants, mainly focused on their understanding of the past landscape of different parts of Southeast Asia based on pollen studies. A memorandum of understanding was also signed by the French Institute of Pondicherry and the Birbal Sahni Institute of Palaeosciences Lucknow, to take forward collaborative research work with an emphasis on research plans focused on the understanding of past landscapes and climate variation.

The International Association of Sedimentologist (IAS) organized their Special Lecture at Birbal Sahni Institute of Palaeosciences Lucknow. The event took place from 30th September to 1st October 2019 and was delivered by Prof. Christopher Fielding, professor and Coffman chair of Sedimentary Geology at the Department of Earth and Atmospheric Sciences, University of Nebraska-Lincoln, U.S.A. The lecture was comprised of a two-day session focused on two different themes: The end-Permian mass extinction from a high southern palaeolatitude; Towards a new generation of facies models for fluvial systems and their deposit.

The 12th International Symposium on Fossil Algae was organized at the Birbal Sahni Institute of Palaeosciences, Lucknow, from September 16th-18th, 2019. A fair number of national and international participants presented their research work at this conference. According to the International Fossil Algae Association announcement, the next 13th International Symposium on Fossil Algae will be held in Italy, in 2023.

Another successful event that was held in India from 4 to November 6th, 2019, was the XXVII Indian Colloquium on Micropaleontology and Stratigraphy (ICMS), held at the Banaras Hindu University, Varanasi. The first edition of

ICMS was organized in 1971, at the Bangalore University, to commemorate the 75th anniversary of Prof. L Rama Rao birth. Since then, 26 colloquia have been successfully convened by various organizations, universities, and institutes. The ICMS is a regular platform for scientists and students from academia and industry to present different ideas and new scientific methodologies in the fields of micropaleontology and stratigraphy. Additionally, it is an important event to set future guidelines for the development of micropaleontological research in India. There were 13 focal themes in this colloquium and a special session on "Recent advances in Indian Ocean Cenozoic Paleoceanography and Palaeoclimate". The event also had a session on palynology and palynofacies applications in biostratigraphy and source rock evaluation, in which several studies from various regions of India were presented. The next Indian Colloquium on Micropaleontology and Stratigraphy will be held at Pune University, Pune, in 2021.

The *AsianDendro 2019 – The 6th Asian Dendrochronology Conference* was also organized at the Birbal Sahni Institute of Palaeosciences, Lucknow, India. This event was held in association with the Asian Dendrochronological Association from November 24-30, 2019. This conference had 62 participants from 11 nations namely Bhutan, China, Germany, Iran, Japan, Nepal, Poland, Russia, Switzerland, Thailand, and India. Participants presented their research work on multiple disciplines related to tree-ring studies from various regions of Asia and adjoining regions. A total of 13 technical sessions, which included keynote talks, oral and poster presentations, occurred during November 25-28, 2019. A two-day workshop was also organized in the last two days of the conference, focusing on different tree-ring aspects: Quantitative Wood Anatomy, Tree-ring / R environment, and Dendrogeomorphology. It was announced by the Asian

Dendrochronological Association that the 7th Asian Dendrochronology conference shall be held in Zhuhai, China, in 2021.

Reference:

Krishnamurthy, A., Gillard, M.J., Prasad, S., Morrison, K.D., 2019. Holocene land cover and land use in South and Southeast Asia for climate modeling. *Past Global Change Magazine*, 27(2), 75.

## Nordic Countries

By Kasia K. Śliwińska

At the end of April 2019, the Collegium Palynologicum Scandinavicum (CPS) held the annual board meeting in Stockholm. This year, the society will hold a CPS board election. The next member meeting is expected to take place this year during the XV IPC/XI IOPC, in Prague. More detailed information on the upcoming member meeting and the elections will soon be provided on the CPS website ([www.palynology.info](http://www.palynology.info)). During the board meeting in April, CPS awarded one student scholarship to cover expenses in connection with the 52nd AASP Annual Meeting held in Ghent, Belgium, 1–3 July 2019. The scholarship was awarded to Suzanne Pultz, who at that time was a master student at Copenhagen University. CPS will also award at least one student scholarship in connection with the XV IPC/XI IOPC 2020.

A few months later, several Nordic palynologists participated in the meeting in Ghent. Among them was also Suzanne Pultz, who gave an oral presentation entitled: "Middle Jurassic palaeoenvironmental events in Europe – evidence from palynology and carbon isotopes".

Last autumn (October 29-30) the Norwegian Petroleum Directorate in Stavanger (Norway) once again hosted Force Biostratigraphy



Seminar. The seminar was entitled “Advances in Integrated Biostratigraphy”. A lot of attention was drawn to machine learning, data science and various aspects of technological advances within the field of stratigraphy, including palynology. Sofie Bernhardsen (Lundin) received the award for the best student presentation. The award for the best presentation of the seminar went to Kasia K. Śliwińska (Geological Survey of Denmark and Greenland, GEUS). A very interesting presentation was given by Robert Williams from Norwegian Petroleum Directorate, who has recently started his pioneering work on the digitalisation of palynological slides. His plan is to digitalise all the palynological slides which currently are stored at the Norwegian Petroleum Directorate. It will be possible to hear more about the progress of Robert Williams work during the XV IPC/XI IOPC later this year.

Last year, many interesting papers were published by Nordic countries’ palynologists. Two of them were broadly acclaimed. In March, Sam Slater (Swedish Museum of Natural History) and his colleagues, published a paper entitled “Substantial vegetation response to Early Jurassic global warming with impacts on oceanic anoxia”, Nature Geoscience DOI: 10.1038/s41561-019-0349-z. The authors investigated spore and pollen assemblages across the Pliensbachian/Toarcian boundary and showed that the impacts of the early stages of volcanogenic global warming were more severe for continental ecosystems than marine ecosystems. A few months later, in October 2019, Sofie Lindström (Geological Survey of Denmark and Greenland, GEUS) and her colleagues published a paper entitled “Volcanic mercury and mutagenesis in land plants during the end-Triassic mass extinction”, Science Advances DOI: 10.1126/sciadv.aaw4018. The authors discovered a correlation between increased levels of mercury and high occurrences of abnormal fern spores. This led the authors to the conclusion that

the parent plants were suffering from severe environmental stress and genetic disturbance. This observation provided evidence that emissions of toxic volcanogenic substances contributed to the end-Triassic biotic crisis. It is great to see that research which is based on palynology is gaining public interest and even, inspiring poets <https://thepoetryofscience.scienceblog.com/1008/a-massacre-in-mercury/>



Photo: Force Biostratigraphy Seminar “Advances in Integrated Biostratigraphy” took place in October 2019 in Stavanger, Norway. Photo courtesy of Patricia Embry (Equinor).

## South America

By Andrés Pardo

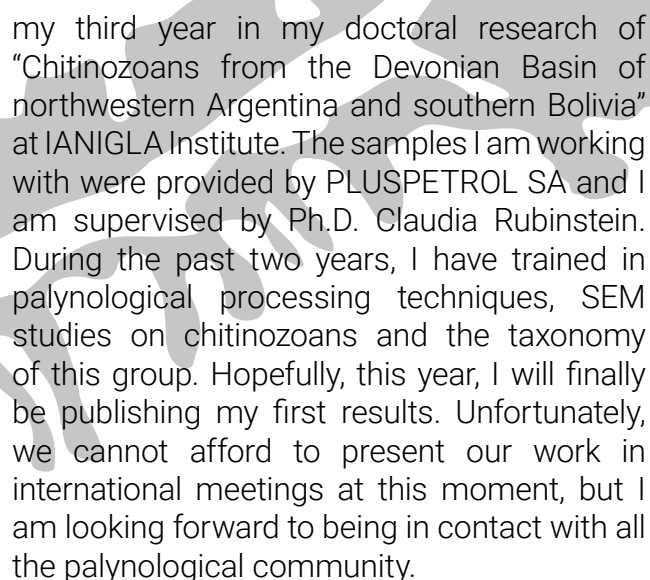
### ARGENTINA

1. Invitation to the XVIII Argentine Symposium of Paleobotany and Palynology to be held in the province of Jujuy, Argentina, from August 30 to September 2, 2021.

2. Dear community,

My name is Sonia Camina. I am starting





my third year in my doctoral research of "Chitinozoans from the Devonian Basin of northwestern Argentina and southern Bolivia" at IANIGLA Institute. The samples I am working with were provided by PLUSPETROL SA and I am supervised by Ph.D. Claudia Rubinstein. During the past two years, I have trained in palynological processing techniques, SEM studies on chitinozoans and the taxonomy of this group. Hopefully, this year, I will finally be publishing my first results. Unfortunately, we cannot afford to present our work in international meetings at this moment, but I am looking forward to being in contact with all the palynological community.

Sonia Camina IANIGLA-CCT-CONICET-Mendoza, C.C. 131 Mendoza (5500), Argentina.  
scamina@mendoza-conicet.gov.ar.

## BRASIL

The POLARQ/ CNPq Research Group (Archaeopalynology, Paleoenvironment, and Ethnobotany) is connected to the Graduate and Postgraduate Program in Archaeology of the Federal University of Piauí, in Teresina city, State of Piauí, Northeastern Brazil. This research group is linked to the project: "Landscape, climate and subsistence in the Piauí State: an archaeological approach" (PICCN3069-2017), whose academic-scientific studies encompass the taxonomic identification, quantification and interpretation of archaeobotanical data (e.g., pollen grains, phytoliths, starch grains, and others) recovered from soils and materials of archaeological context, as well as ethnobotanical research on human populations living around the archaeological sites of Piauí State (for example, babassu coconut breakers). Our team consists of an interdisciplinary group composed by Brazilian and foreign researchers, as well as students of archaeology, botany, and geosciences. We are also responsible for the reference collections of plant microremains (pollen

grains and phytoliths) whose applications vary from archaeological interpretations to paleoenvironment reconstructions.

Contacts: Dr. Aline Freitas (tuttyfreitas@gmail.com) + 55 86 99972-3519

## COLOMBIA

We extend a cordial invitation to the 54th Annual Meeting AASP-The Palynological Society, Universidad de Caldas, Manizales, Colombia. August 8-12, 2021. Check for more information at the end of this Newsletter.

## Other news...

### **Inclusion of LGBTQ+ People in Bioscience Study (Geology & Geoscience Organizations)**

Hello! My name is Tony Colella, and I'm a Ph.D. candidate in the University of Arizona's School of Geography & Development. I'm writing to request that you please pass along a call for participants for an online study regarding the inclusion of LGBTQ+ people in the biosciences. Although the study is specifically about the biosciences, the surveys I've included below are specifically for people outside the biosciences. I'm seeking representation from people within the geosciences.

I've included a call below that can be forwarded to or posted in any listservs, social media, or newsletters you might have.

Thank you very much!

---

Thank you for taking the time to read this call for volunteers. I am seeking participants in a study to understand more about the experiences of LGBTQ+ people in science education. I'm looking for folks who have attended (or are attending) colleges and universities across the United States to take at least one short survey. If you wish to learn more, or to take any of the surveys, please click the links below. You can read more about the study when you do so.

I have two surveys that you may be able to take.

- Survey 1 (<https://bit.ly/2MjHRgC>) is open to anyone in any STEM (science, technology, engineering, or math) field, so long as they identify as LGBTQ+. Because I ask you to compare some of your experiences, you should also have taken at least one course in any bioscience or life science field.
- Survey 2 (<https://bit.ly/2MjFSbS>) is open to anyone who has taken some college coursework, regardless of field or sexual orientation or gender identity. However, this survey includes an Implicit Assumption Test, so please make sure that you take this one on a computer with a keyboard (it won't work on a mobile browser).

An Institutional Review Board responsible for human subjects research at the University of Arizona reviewed this research project and found it to be acceptable, according to applicable state and federal regulations and University policies designed to protect the rights and welfare of participants in research. For questions about your rights as a participant in this study or to discuss other study-related concerns or complaints with someone who is not part of the research team, you may contact the Human Subjects Protection Program at the University of Arizona at 520-626-6721, or online at <http://rgw.arizona.edu/compliance/human-subjects-protection-program>.

Please contact Tony at [tonyrcolella@email.arizona.edu](mailto:tonyrcolella@email.arizona.edu).

[arizona.edu](http://arizona.edu) if you have any other questions or comments.



# Call to Serve

## Newsletter open positions



Not sure that you want to run for office but want to help the society? Become a newsletter correspondent, either formally or informally! We welcome student and professional news, book reviews, reports on meetings, workshops, etc. Submissions are due on November 15, February 15, May 15, and August 15, annually.

Current vacancies include:

- BOOK REVIEW EDITOR
- UNITED KINGDOM CORRESPONDENT

The AASP - The Palynological Society Newsletter is a publication with an ISSN number (ISSN 0732-6041), which **helps your CV!**

Our newsletter is only as good as the news we receive.  
Please stay in touch!

Gilda Lopes  
Newsletter Editor

# Consider Helping our Mission



## AASP FOUNDATION CENTURY CLUB

### What?

The Century Club of the American Association of Stratigraphic Palynologists Foundation is an organization founded by the Trustees of the Foundation in order to provide persons with the opportunity to support activities of the AASP Foundation.

### Why?

1. To develop an established level of giving that will continue to provide a solid financial base for the Foundation.
2. To provide unrestricted funds to support the various publishing activities of the Foundation.
3. To provide a meaningful organization and method of recognition of dedicated "friends" of the AASP Foundation.

### How?

Your tax-deductible contribution of \$100 or more to the AASP Foundation entitles you to belong to the Century Club. The 2020 "membership" drive is on now. Your contribution may be made by personal check or by a pledge which is **payable on or before December 31, 2020**.

### Join!

To join the Century Club, simply complete the attached Contribution/Pledge Form and mail to the address listed below.

The AASP Foundation is a 501 (c)(3) not-for-profit, public organization registered in the United States. This means that contributions to the AASP Foundation are fully deductible on your U.S. Federal Income Tax return. Also, many employers have a matching gift program whereby they match your personal gift to not-for-profit organizations. It is well worth the effort to explore this possibility concerning your gift to the AASP Foundation.

## 2020 AASP Foundation Century Club Contribution Form

Mail to: Robert T. Clarke, Treas.  
AASP Foundation  
3011 Friendswood Dr.  
Arlington, TX 76013-2033

Name: \_\_\_\_\_

Address: \_\_\_\_\_

Contribution Enclosed: \$\_\_\_\_\_ I wish to pledge: \$\_\_\_\_\_

# Upcoming AASP – TPS Meetings



May 26-30, 2020

## **53rd Annual Meeting of the AASP - The Palynological Society**

Baton Rouge, Louisiana, USA

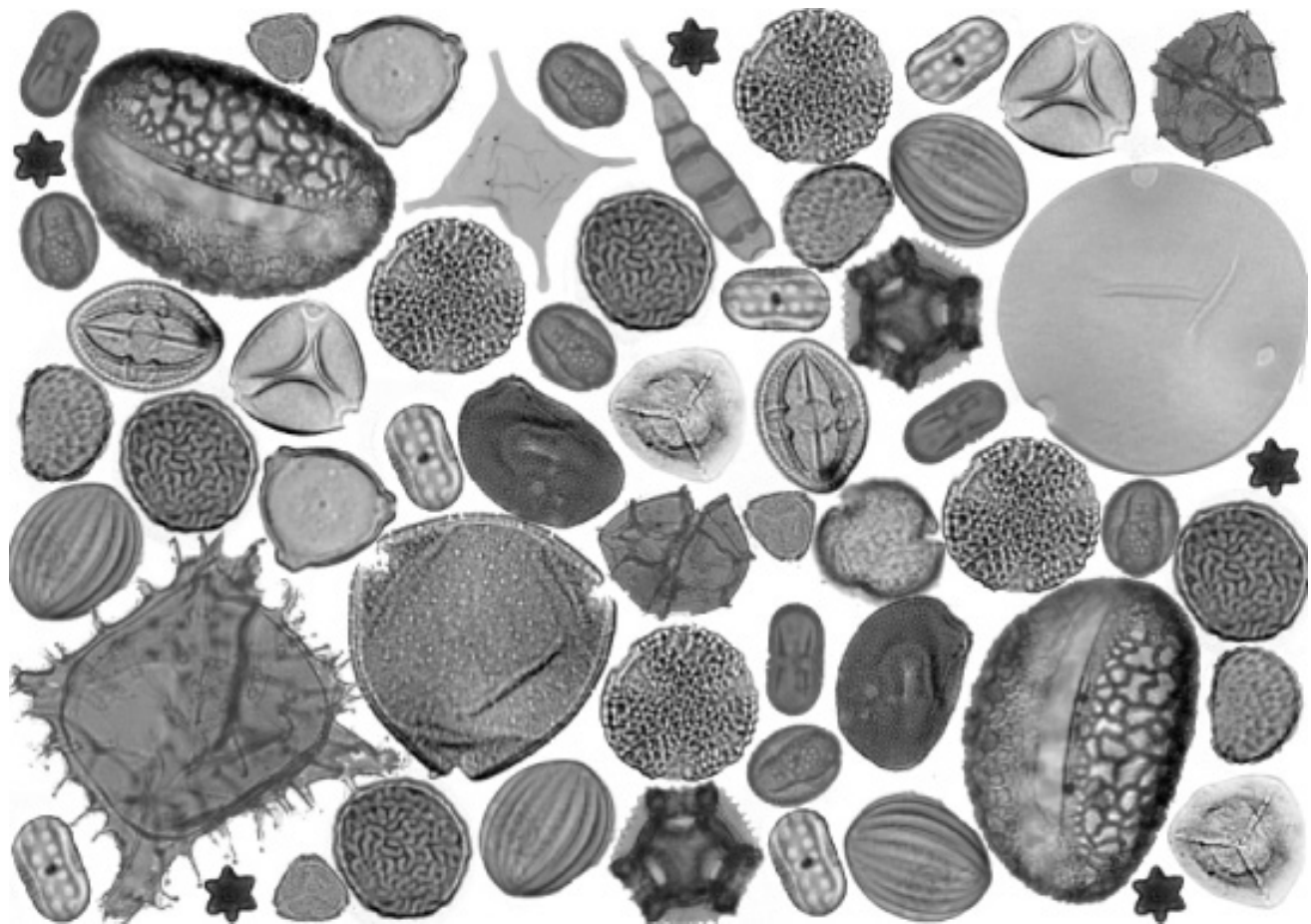
Organizer: Sophie Warny, Kam-Biu Liu & Sibel Bargu

August 8-12, 2021

## **54th Annual Meeting of the AASP - The Palynological Society**

Manizales, Colombia

Organizers: Ingrid Romero, Angelo Plata & Andres Pardo







## 53<sup>rd</sup> AASP – TPS ANNUAL MEETING at LSU, Baton Rouge, Louisiana (May 26-30 2020)



# LSU

**Louisiana State University**

The 53<sup>rd</sup> annual meeting of the AASP – The Palynological Society will be held on the beautiful campus of Louisiana State University, in Baton Rouge, Louisiana between Tuesday, May 26<sup>th</sup> and Saturday, May 30<sup>th</sup> 2019.

Note that this is unusually early for our society's annual meeting, but this is a necessary decision to avoid holding the meeting during hurricane season.

The meeting will be convened by Sophie Warny from CENEX (LSU Department of Geology and Geophysics) along with Kam-Biu Liu and Sibel Bargu Ates from the LSU College of the Coast & Environment.

We are looking forward to welcoming you to our beautiful campus and the unique ecosystems of the great state of Louisiana.





## **The tentative agenda for the meeting is as follows:**

Tuesday, May 26 2020

**Pre-conference field trip** to Mississippi delta and marshes thanks to a partnership with LUMCON, in Cocodrie, Louisiana (see picture above). We reserved the 58 feet R/V Acadiana and will take participants to Terrebonne Bay.

### **Ice breaker**

Wednesday, May 27 2020

### **Technical meeting**

**Tour of CENEX facilities** and LSU MNS collections

Thursday, May 28 2020

### **Technical meeting**

### **Conference dinner at Nottoway Plantation.**

The dinner will include a 5-course menu designed to share Louisiana's unique cuisine with our international guests.

Friday, May 29 2020

### **Technical meeting**

Saturday, May 30 2020

**Post-conference field trip** to Louisiana swamps and visit of the Tabasco plantation, located on a salt dome.



Nottoway Plantation is a magnificent 1850's sugarcane estate, and is the home of the South's largest existing antebellum mansion, now stunningly restored to its original architectural design.

Nottoway's Mansion Restaurant offers classic Louisiana cuisine, Creole-inspired, with outstanding service and stunning views of century-old oak trees.

### **The 3-day sessions will include various palynological topics such as:**

- a) Paleo-climate and paleo-environmental reconstruction.
- b) Phytoplankton as indicator of water quality from past to present (HABs, etc.).
- c) Holocene coastal palynology and paleotempestology
- d) A Paleozoic Palynology session in memory of Gordon Wood, with a focus on Permian to honor Dr. George Hart, LSU Alumni Professor and one of the founding fathers of AASP.
- e) The importance of palynology for biostratigraphy and biosteering.
- f) Forensic palynology and melissopalynology.

### **Airports:**

Our campus is located in Baton Rouge, Louisiana. The most convenient airport (located about 15 to 20 minutes from campus by car) is the Baton Rouge airport.

The New Orleans airport often has lower fare flights, but this airport is located about 1.5 hours from our campus, and public transportation is not adequate at the moment. Renting a car would be necessary to travel to Baton Rouge.

### **Hotels:**

We will not be signing a contract with a specific hotel as there are many lodging opportunities on and around campus. We highly recommend the LSU campus hotel: The Lod Cook (see image below).

It has free on campus parking, a gym, swimming pool, complementary breakfast and wifi, and it is about a 20-minute walk to the auditorium where the conference will take place. The hotel is also on the free LSU bus route (we will need to confirm whether or not the bus operates in May).

**Space is limited at that hotel, so we encourage you to book immediately.**

<http://www.thecookhotel.com/>







### **Details on post-conference fieldtrip:**

The post-conference field trip will take the participants about two hours west of our campus, towards Lafayette, Louisiana.

We will first visit the world famous Tabasco plantation and factory on Avery Island. This will include a visit of their garden with a botanist. He will share with us the many Louisiana native species. The Tabasco plantation is located on a salt dome amongst the marshes

- thus the site name of Avery "island". Salt is actively being mined at that location.

We will then have lunch at the Tabasco restaurant, well known for its cajun meals.

We will finish the day by immersing guests into Louisiana's beautiful, vast, and mysterious Atchafalaya swamp where guests will view alligators, diverse populations of birds, and navigate in the middle of Louisiana's swamp cypress.



### **MARK YOUR AGENDA!**

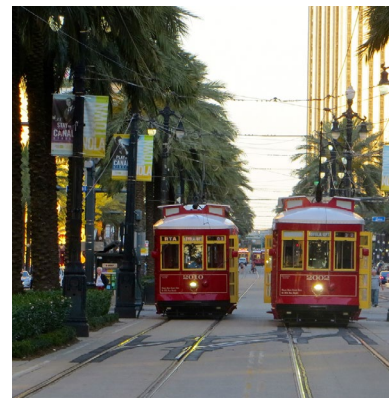
**The 53<sup>rd</sup> AASP CONFERENCE WILL BE HELD MAY 26-30, 2020  
ON THE BEAUTIFUL LSU CAMPUS, IN BATON ROUGE, LOUISIANA**

The campus is located about one hour west of New Orleans.

The conference will be hosted by  
the Center for Excellence in Palynology (CENEX) and  
the Center for Energy and Environment at Louisiana State University

If you have any questions, contact:

Sophie Warny at [swarny@lsu.edu](mailto:swarny@lsu.edu)  
Sibel Bargu Ates at [sbargu@lsu.edu](mailto:sbargu@lsu.edu)  
Kam-Biu Liu at [kliu1@lsu.edu](mailto:kliu1@lsu.edu)



# **LSU**

**Louisiana State University**







You still wonder whether to attend the  
**Annual AASP Meeting in Baton Rouge?**

You don't know so many people yet?

You are a BA, MA, or PhD-student or  
 recently started your Post-Doc?

Please join us and meet your fellows at the  
**'2nd EARLY CAREER NIGHT'** of the Annual AASP  
 meeting in Baton Rouge **sponsored by**  
**Shell & CENEX**. Just catch up or meet new  
 friends, and build your network.

Organized by the student representative  
 (email to [Julia.Gravendyck@zedat.fu-berlin.de](mailto:Julia.Gravendyck@zedat.fu-berlin.de) for questions), we meet after the  
 first day of conference (Wednesday, May 27<sup>th</sup>)  
 in one of the campus bars. In a more informal  
 setting you can meet your fellow 'early  
 careers', exchange experiences and enjoy a  
 free meal and drink.





## Manizales, Colombia

Manizales lies on the Colombian Central Mountain Range in the Andes. It is described as a city with an "abrupt topography", characterized by a great deal of ridgelines and steep slopes which, combined with the seismic instability of the area, has required architectural adaptations and public works to make the city safer. The city is located near the volcano Nevado del Ruiz, which has an altitude of 5,321 meters (17,457.3 ft).

Manizales was founded on October 12, 1849. The city is the main center for the production of Colombian coffee and an important hub for higher educational institutions.

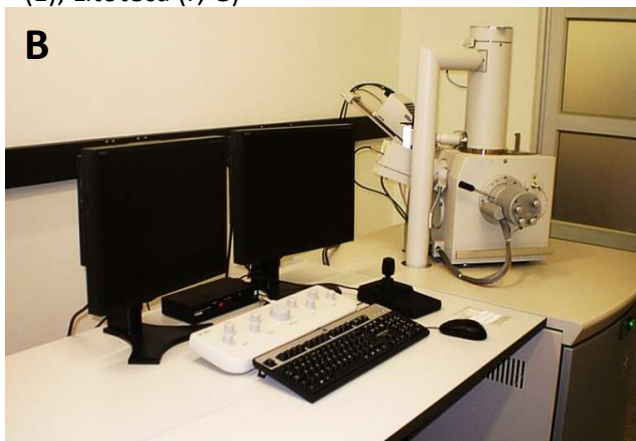
## 54th Annual Meeting of the AASP - TPS, 2021





## Universidad de Caldas, Instituto de Investigaciones en Estratigrafía-IIES

Universidad de Caldas is among the 10 best universities in the country. The IIES (A) is a research institute that focused in the development of research projects related with biostratigraphy, palynology, nannofossils and foraminifera, petrography, sedimentology and geochemistry. The images below are showing some of the laboratories of the institute. Electron microscopy lab (B, C); Palynology lab (D); Chemical preparation lab (E); Litoteca (F, G)





## Vegetation and weather

The vegetation of Manizales and its surroundings goes from the mountain forest to Paramo. Down the valleys the vegetation is more of a premountain forest.

Manizales only has two seasons, wet and dry, and the temperatures can vary from 5 to 30 °C during the day.





## Colombian coffee

One of the main attractions of Colombia is its coffee. Manizales is located in the northern part of the Colombian Coffee-Growers axis ("Eje Cafetero"), and it is considered the main center of coffee production. Even though Manizales has a very complex topography, there are many coffee plantations in its fertile lands.





## Other Meetings and Workshops of Interest





Since 2009, the world community of palynologists and palaeobotanists has met every four years to discuss the latest research, and to exchange experiences. The 15<sup>th</sup> International Palynological Congress (IPC-XV 2020) and the 11<sup>th</sup> International Organisation of Palaeobotany Conference (IOPC-XI 2020) are coming soon. This joint congress will be held in Prague, from the 12<sup>th</sup> to the 19<sup>th</sup> of September 2020, hosted by Czech palynologists and palaeobotanists. In 1820, a binomial nomenclature for fossil plants was used for the first time by the “Father of Palaeobotany” Caspar Maria Sternberg, when publishing *Flora der Vorwelt*. We are delighted to dedicate this meeting in honour of 200 years of Palaeobotany.

It will be an excellent opportunity for the Czech Republic (a country rich in plant fossil finds, palynological sites, and palynological and palaeobotanical history) to host the leading experts in various disciplines, and to promote scientific innovations. Joint symposia are planned to foster interaction and integration between palynologists and palaeobotanists, as well as plenary sessions of general interest. The meeting is promoted by the collective efforts of the International Federation of Palynological Societies (IFPS) and the International Organisation of Palaeobotany (IOP).

Please complete the pre-registration form on our website:

<http://prague2020.cz/registration.php>



### Location

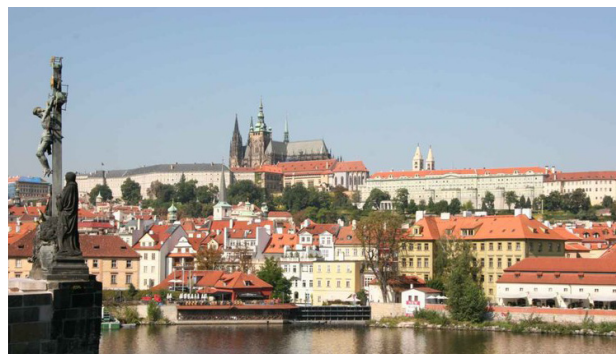
**Prague** is the largest city and the capital of the Czech Republic. Situated in the **heart of Europe**, it is one of the continent's most beautiful cities, and the primary Czech economic and cultural centre. It is famous for its historical monuments and sights, and has UNESCO World Heritage status. The Charles Bridge (Karlův most) across the Vltava River probably represents the city's most famous landmark. The winding course of the Vltava, with its succession of bridges and changing vistas, contrasts with the ever-present backdrop of the great castle of Hradčany (Prague Castle), which dominates the left-bank region of the city. Prague is famous for its cultural life. Wolfgang Amadeus Mozart lived here, and his Prague Symphony and Don Giovanni were first performed in Prague. In addition, the lyrical music of the great Czech composers Bedřich Smetana, Antonín Dvořák, and Leoš Janáček is commemorated each year in a music festival.

### Venue

The congress will be held in the **Clarion Congress Hotel Prague**, Freyova 33, Prague 9 (<https://www.clarioncongresshotelp Prague.com/en/>). This is an international four-star hotel and a state-of-the-art conference center, providing high-quality services. The hotel is 30 minutes by car from the International Václav Havel Airport and 10 minutes by metro from the historic city centre of Prague. The conference centre is directly on the metro B line, station “Vysočanská”.

### Facilities

The hotel offers accommodation in 559 rooms. All rooms and public areas are fully air-conditioned. Catering is provided in 3 hotel restaurants, which can seat 900 people. Conference facilities are divided into 23 halls and meeting rooms, comfortably seating up to 2500 participants. The facilities are equipped with state-of-the-art audio-visual technology.



### Call for Symposia

It is our pleasure to invite proposals for symposia for IPC XV/ IOPC XI 2020, the joint meeting of the 15<sup>th</sup> International Palynological Congress and 11<sup>th</sup> International Organization of Palaeobotany Conference, to be held September 12<sup>th</sup>–19<sup>th</sup> 2020, at the Clarion Conference Hotel, Prague, Czech Republic

The deadline for proposals is August 31<sup>st</sup>, 2019. Proposed symposia could cover various disciplines such as palynology, palaeobotany, palaeoecology, palaeoclimatology, biostratigraphy, plant taxonomy, plant morphology, cell biology, aerobiology, allergology, melissopalynology and forensic palynology. We also welcome proposals involving cutting-edge techniques.

To organize a symposium, please prepare a “**pre-proposal**” that briefly describes the symposium in English. This pre-proposal should include the following:

1. a descriptive title;
2. one or two paragraphs explaining the purpose of the symposium;
3. a list of any possible speakers, their institutions or affiliations, and preliminary presentation titles.

Please use the attached file to submit the pre-proposal. We will accept only one symposium proposal from each individual. The length of symposium talks is 15 minutes, plus 5 minutes for discussion. Organisers of symposia may propose one invited speaker with a 25-minute long talk, plus 5 minutes for discussion. Please send the pre-proposal to the program committee ([ipciopc2020@seznam.cz](mailto:ipciopc2020@seznam.cz)) and use the subject heading: IPC/IOPC 2020 Symposium proposal.

The program committee will review all proposals, and may make suggestions in view of the organization of the whole conference. For example, the committee may request merging of proposed symposia with similar topics. We also welcome workshop proposals.

More information about the IPC/IOPC 2020 is available at:

<http://prague2020.cz/introduction.php>

### Scientific programme

This will cover all aspects of palaeo- and actuopalynology and palaeobotany including:

*Taphonomy*  
*Airborne pollen*  
*Methods in palynology and palaeobotany*  
*Pollen/Spore morphology*  
*Pollination ecology*  
*Forensic palynology*  
*Melissopalynology*  
*Quaternary palynology and palaeobotany*  
*Cenozoic palynology and palaeobotany*  
*Mesozoic palynology and palaeobotany*  
*Palaeozoic palynology and palaeobotany*  
*Proterozoic Palynology*

XV International Palynological Congress  
 XI International Organization of Palaeobotany Conference

200 Years of Palaeobotany

12<sup>th</sup>–19<sup>th</sup> September, 2020, Prague, Czech Republic

<http://www.prague2020.cz/>

### Transport access

Transfers from the International Airport are available via the hotel's limousine service, by public transport as well as Airport Transport services. A station for the Metro B line is adjacent to the hotel. Trams and buses run outside, and a train terminal is three minutes walk away.

### Practical hints

#### Climate

September usually brings pleasant early autumnal weather with colder mornings and hot afternoons. Temperatures of around 15-18 °C can be expected.

#### Transportation

Arriving by plane - Václav Havel Airport is served by many international airlines. It is located 15 km from the city center and 18 km from the conference venue. Taxi from the airport to the venue is at present about



€35. A shuttle bus service operates as well. City bus No. 119 will take you from the airport to the Veleslavín metro terminal from where you can go by metro line A to Můstek, switch to line B and go to station Vysočanská.

#### Arriving by rail or car

Prague is easily reached by rail or car. If you arrive by train, you will find metro stations (line C) at the Central Railway Station and at the Holešovice Railway Station. From either you can go to Florenc station and switch to line B to go to Vysočanská station.

### City transportation

City Transportation Prague has a comprehensive network consisting of three metro lines, and trams and buses. Single tickets or travel passes can be purchased at most newspaper stands or from the coin machines at metro stations.

#### Car rental

Most of the major car rental companies (e.g. Avis, Sixt) have offices in Prague. Detailed information is available from the Symposium secretariat. We recommend making reservations in advance.

#### Parking

Clarion Congress Hotel has its own parking. Ask the guard at the entrance for the parking costs and the hotel parking area.

#### Currency

Official currency is the Czech Crown (Kč). The present exchange rate is 26 CZK for 1 Euro. Major credit cards are accepted in most shops, restaurants and hotels. You can buy Czech Crowns at banks and other authorized money exchange offices. ATMs accept most bank and credit cards. Travellers' cheques are only accepted by leading banks.

#### Visa Policy

Participants from most European countries and the USA can enter the Czech Republic without a visa. Other participants are advised to check requirements at their closest Czech Republic embassy or consulate, and make their own arrangements. Detail information can be found on [https://www.mzv.cz/jnp/en/information\\_for\\_alien/general\\_visa\\_information/index.html](https://www.mzv.cz/jnp/en/information_for_alien/general_visa_information/index.html). An official letter of invitation will be sent on request. Such a letter will not grant any financial support.

#### Insurance

The Organizing Committee does not accept any liability for personal injuries or loss or damage of property belonging to participants or accompanying persons. Kindly check your personal and travel insurance before you travel.

#### Electricity

Electricity supply is 220 V, 50 Hz.

### Tips for Prague visitors

**Honest Guide:** [https://www.youtube.com/playlist?list=PLM9\\_KZNJw8qEZd4MxOXfSvKszTJKLI\\_J2](https://www.youtube.com/playlist?list=PLM9_KZNJw8qEZd4MxOXfSvKszTJKLI_J2)

<https://www.youtube.com/channel/UCt7oj318jVQi7vRbc1bNjJA>

	10 <sup>th</sup> –12 <sup>th</sup>			13 <sup>rd</sup>	14 <sup>th</sup>	15 <sup>th</sup>	16 <sup>th</sup>	17 <sup>th</sup>	18 <sup>th</sup>	19 <sup>th</sup> –20 <sup>th</sup>
8:30–10:30	Pre-Conference Field-Trip <i>(field trip will start in Dresden or Chemnitz)</i>			Oral Presentation	Oral Presentation	Mid-Conference Field-trips	Oral Presentation	Oral Presentation	Oral Presentation	Post-Conference Field-trips
10:30–11:00				Coffee break	Coffee break		Coffee break	Coffee break	Coffee break	
11:00–13:00	10 <sup>th</sup>	11 <sup>th</sup>	12 <sup>th</sup>	Oral Presentation	Oral Presentation		Oral Presentation	Oral Presentation	Oral Presentation	
13:00–14:30			Registration 11:00-18:00	Lunch	Lunch		Lunch	Lunch	Lunch	
14:30–16:30				Oral Presentation	Oral Presentation		Oral Presentation	Oral Presentation	Workshops	
16:30–17:00				Coffee break	Coffee break		Coffee break	Coffee break	Coffee break	
17:00–19:00				Ice breaker party from 18:00	Oral and poster Presentation		Oral and poster Presentation	Oral and poster Presentation	Oral and poster Presentation	
20:00–24:00					Gala “Sternberg’s” Dinner (optional)					



We look forward to receiving your submissions.

Best wishes

Organizing committee

IPC XV / IOPC XI 2020

12<sup>th</sup>-19<sup>th</sup> September 2020, Prague, Czech Republic





#### Pre-Conference Field Trip, 3 days:

##### Permian of Chemnitz

The field trip will present classical outcrops, ongoing excavations and leading exhibitions, which show fossil assemblages found in Permian terrestrial strata of SE Germany. Anatomically preserved plants, animals and their taphonomic pathways will be presented and discussed as modern methods of „fossil hunting“ and collecting. [R. Rössler]

#### Mid-Conference Field Trips, 1 day:

##### Lower Palaeozoic of the Barrandian area

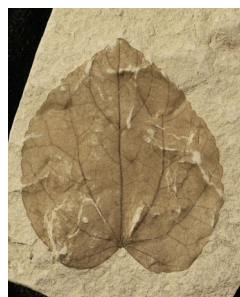
Field-trip to the Cambrian to Devonian sediments south west of Prague will give an opportunity to visit both new and classic outcrops, including the first internationally recognized GSSP of the Silurian-Devonian boundary. At all sites collection of fossils and sampling for microfossils will be possible. [O. Fatka, L. Vodička]

##### Late Cretaceous of the Bohemian Cretaceous Basin

A field trip to three localities: Horoušany, Vyšehořovice, Pecínov of the Czech fresh water Cenomanian will provide an overview of palaeobotany and sedimentology of the Bohemian Massif in mid-Cretaceous. At all outcrops, collecting of fossils and sampling for microfossils will be possible. [J. Kvaček]



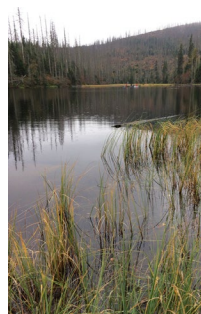
##### Paleogene and Neogene of North Bohemia



Eocene to Pliocene sediments are preserved in depressions and grabens along Krušné hory Mts. Besides freshwater coal-bearing deposits, products of volcanic activity occur in Western and Northern Bohemia, forming the eastern branch of the European Cenozoic Volcanic Alkaline Province. North Bohemian Most Basin will be visited with particular interest in loc. Roudníky (Eocene-Oligocene transition) and loc. Bílina (lower Miocene). [J. Sakala, V. Teodoridis]

##### Postglacial of Šumava National Park

This excursion will cover late Quaternary vegetation changes with focus on long-term dynamics of natural mountain spruce forests and their disturbances. We will visit investigated lakes of glacial origin and peat bogs, where results from sedimentary archives will be presented. [P. Kuneš]



#### First Circular / Fieldtrips

##### Modern pollen deposition in relation to Holocene vegetation changes in the Krkonoše Mts.

This excursion will visit our highest mountain range in NE Bohemia. In this iconic landscape, covered in its highest part by azonal tundra accompanied by many peatbogs, a long-term pollen monitoring project has been under way since 1997. We will concentrate on pollen monitoring results in relation to Holocene development of mountain tundra and mountain forest. [H. Svitavská-Svobodová]

##### Late Pleistocene and the Holocene of Bohemian Paradise

Barely hour and a half away from Prague, “rocky cities” built of Cretaceous sandstones offer an opportunity to enjoy picturesque, rarely seen landscapes and to visit some classical, as well as freshly investigated Late Pleistocene and Holocene sites. Emphasis will be given on stratified archaeological sites under rock shelters and adjacent wetlands which together provided a wealth of environmental proxies. [P. Pokorný]



#### Post-Conference Field Trips, 2 days:

##### Permian of Bohemia

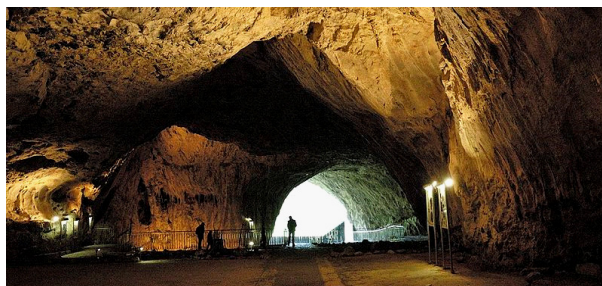
The Bohemian Paradise is situated about 100 km North-East from Prague. The Klenotnice Muzeum in Nová Paka with rich Permian fossil wood collection will be visited. A tour to the nearby Gothic „Pecka“ Castle is planned. „Pecka“ means stone (both geode and part of fruit). Fossil wood is visible in the castle courtyard. Actually, „Pecka“ Castle was built on rocks containing petrified wood in the 12<sup>th</sup> century.



Two localities with plant fossils of the Permian Rudník Horizons will be visited during the field trip, and there will be also a possibility to find some fragments of silicified woods in fields. [Z. Šimůnek, V. Mencl]

##### Miocene in the Carpathian Foredeep and Quarternary of Moravian Karst

The area of South Moravia known not only for Czech vineyards and wine cellars (Mikulov), but also for Miocene deposits of Carpathian Foredeep, several prehistorical localities (Pavlovské vrchy Hills, Pasohlávky settlement, Čejč Lake) and Moravian Karst with 15 palynologically evaluated caves (Kůlna Cave etc.) [N. Doláková, E. Břízová, M. Kováčová]



#### FIELD TRIPS

<http://www.prague2020.cz/fieldtrips.php>





JUJUY 2021

# XVIII Simposio Argentino de Paleobotánica y Palinología

- Conferencias magistrales
- Sesiones plenarias
- Excursiones
- Cursos
- Premios
- y mas....



30 de agosto al 2  
de setiembre



San Salvador de Jujuy, Jujuy, Argentina



**Facultad  
de Ciencias  
Agrarias**

CONICET



**UNJu**  
Universidad  
Nacional de Jujuy

INECOA



**Asociación  
Latinoamericana  
de Paleobotánica  
y Palinología**



## XVIII SIMPOSIO ARGENTINO DE PALEOBOTÁNICA Y PALINOLOGÍA-SAPP 2021

*" Los enfoques ecológicos y  
paleoecológicos, a diferentes  
escalas espaciales y temporales,  
desde la paleobotánica y la  
palinología"*



Tenemos el agrado de invitar a la comunidad científica a participar del XVIII Simposio Argentino de Paleobotánica y Palinología (SAPP 2021), a realizarse por primera vez en la ciudad de San Salvador de Jujuy, provincia de Jujuy, entre el 30 de agosto y el 2 de setiembre de 2021. En esta oportunidad entre los ejes temáticos de la reunión se enmarcan los enfoques ecológicos y paleoecológicos, a diferentes escalas espaciales y temporales, desde la paleobotánica y la palinología, perspectiva que ha tomado relevancia en diversos trabajos de investigación, como pudo observarse en recientes eventos científicos. Se espera también contar con aportes y nuevas ideas que apunten a incorporar diversas disciplinas básicas y aplicadas.

### **Antecedentes:**

Este prestigioso evento científico nuclea a los especialistas más reconocidos tanto a nivel local como mundial, co-organizado con la Asociación Latinoamericana de Paleobotánica y Palinología (ALPP). Cuenta con el aval de la Universidad Nacional de Jujuy (Resol. R. N° 1356/18), de la Facultad de Ciencias Agrarias de la misma universidad (Resol. CAFA N°428/2018), del Instituto de Ecorregiones Andinas INEOA del CONICET y del Gobierno de la Provincia de Jujuy, a través de la Secretaría de Ciencia y Tecnología del Ministerio de Educación (declaración de Interés Provincial. Expediente N° 1081 144/18). Esta edición contará con conferencias plenarias del ámbito nacional e internacional, sesiones generales y temáticas, como también talleres y cursos. Tiene como objetivos fortalecer los vínculos entre investigadores, motivar las vocaciones científicas en nuestros jóvenes becarios y estudiantes y las proyecciones nacionales e internacionales de nuestras investigaciones.

Además es importante destacar que la realización de esta reunión en el marco de una Universidad Nacional posibilita la participación de los estudiantes de carreras afines a las disciplinas que se desarrollan en el Simposio.

### **Sede del evento**

La provincia de Jujuy se encuentra en el extremo noroeste de la Argentina, cuenta con una alta diversidad biológica y de climas, consecuencia de la variación altitudinal, lo que se refleja en una amplia gama de ecosistemas, desde los 300 msnm, en la ecorregión del Chaco, hasta más de 4.000 msnm en la Puna y Altos Andes.

La sede del evento es la Universidad Nacional de Jujuy ([www.unju.edu.ar](http://www.unju.edu.ar)) en la ciudad de San Salvador de Jujuy y, que se encuentra a pocos kilómetros de lugares emblemáticos de la provincia, como la Quebrada de Humahuaca hoy patrimonio Mundial de la Humanidad en la categoría de paisaje cultural de la UNESCO (<https://whc.unesco.org/es/list/1116>); la Puna con majestuosos salares, volcanes, humedales (Laguna de Pozuelos: <https://rsis Ramsar.org/es/ris/555?language=es>; Laguna de Vilama: <https://rsis Ramsar.org/es/ris/1040?language=es>) y las Yungas con sus exuberantes bosques subtropicales. Jujuy también se caracteriza por la cultura local, con festividades tan arraigadas en la gente como el festejo del carnaval y las ofrendas a la Pachamama. Para ampliar la información dirigirse a la Secretaría de Turismo de la Provincia de Jujuy: <http://www.turismo.jujuy.gov.ar/>

### **Comisión Organizadora**

Para sugerencias de simposios/mesas redondas y otros asuntos de ámbito científico, o relacionados con la logística operativa, por favor contactarse por mail.



[simposio.sapp2021@gmail.com](mailto:simposio.sapp2021@gmail.com)