

PROGRAM MONDAY JULY 1

(*: eligible for best student contribution)

	Time	Location	Session	Convenor	Title	Presenter
Registration	08:00	Entrance Pand				
Welcome	09:00	Vermeyleylen		Louwey	Welcome - opening meeting	
Talks 1 to 5	09:15	Vermeyleylen	General Palynology	Mangerud	Phanerozoic phytoplankton and the diversification of the marine biosphere	Servais, Thomas
	09:30				End-Permian vegetation collapse marked by "Dead Zone" in the Sydney Basin, Australia	Vajda, Vivi
	09:45				Triassic palynology of NW Bulgaria: Towards a refined Tethys-Peri-Tethys correlation	Götz, Annette E.
	10:00				Palynostratigraphy of the Triassic-Jurassic transition in the Sichuan Basin, southwestern China	Li, Liqin
	10:15				Middle Jurassic palaeoenvironmental events in Europe – evidence from palynology and carbon isotopes	*Pultz, Suzanne
Coffee break	10:30 10:45	Kloostergang				
Talks 6 to 11	11:00	Vermeyleylen	General Palynology	Riding	Palynological aspects of the Upper Jurassic Grès de la Crèche Formation and a comparison with a shoreface complex from the subsurface of the Dutch offshore	Verreussel, Roel M.C.H.
	11:15				Dinoflagellate cyst biogeography reveals enhanced Arctic-Tethys connectivity ending the Toarcian Oceanic Anoxic Event in NW Europe	Houben, Alexander J.P.
	11:30				Palynology, source potential and depositional environment of the Cretaceous succession, northeast Baffin Bay, West Greenland	Nøhr-Hansen, Henrik
	11:45				The Early Cretaceous in the Richardson Mountains (Northwest Territories, Canada): palynological insights on the tectono-stratigraphic architecture of the Canadian Arctic mainland	*Ellefson, Emily D.
	12:00				Palynological insights on Cretaceous clastic basins of southern Yukon, Canada	Bell, Kimberley M.
	12:15				Palynology in deep well surveys for Geothermal Energy – some case studies	Lindström, Sofie
Lunch	12:30 12:45 13:00 13:15 13:30	Kloostergang				
Talks 12 to 18	13:45	Vermeyleylen	Teratology	Vandenbroucke & Lindström	Metal-induced malformations in early Palaeozoic plankton are harbingers of mass extinction	*De Backer, Tim
	14:00				Teratology in fossil spores and pollen - A result of chance, a genetic pattern or a result of ecological upheaval?	*Gravendyck, Julia
	14:15				Mis-shapes, mistakes, misfits: aberration & mutations in terrestrial palynomorphs	Lomax, Barry H.
	14:30				Plant mutations induced by toxic metals during the end-Permian extinction	Paterson, Nial W.
	14:45				Malformed spores and the Frasnian-Famennian Mass Extinction	Marshall, John E.A.
	15:00				New data on aberrant tetrads; implications for palaeoenvironment and past extinction events	Stukins, Stephen
	15:15				Extinction or Resilience? - Fern spore teratology during the end-Triassic mass extinction	Lindström, Sofie
Coffee break	15:30 15:45	Kloostergang				
Talks 19 to 25	16:00	Vermeyleylen	General Palynology	Jaramillo	Where do trabeculae originate and locate: Last frontier in studying morphological complexity of skolochorate dinoflagellate cysts	Yow-yuh, Chen
	16:15				A review of the areoligeracean dinoflagellate cyst <i>Cyclonephelium</i> and morphologically similar genera	Riding, Jim B.
	16:30				Fungal distributions in Wilcox Group Sediments: biostratigraphic or paleoecologic indicators?	O'Keefe, Jen
	16:45				Palynofacies and organic geochemical composition of the Palaeogene sediments of the Garo Hills, Meghalaya, India	Raghumani Singh, Yenkhom
	17:00				Palynology of the Late Miocene 'Pontian' and Pliocene Productive Series from outcrop studies in Azerbaijan, western Caspian Sea	Richards, Keith
	17:15				Organic geochemistry and palynomorphs from the Surma Group in Indo-Myanmar Range, Manipur region	Raghumani Singh, Yenkhom
	17:30				Introduction to the 53rd AASP meeting in Baton Rouge	Warry, Sophie
END	17:45					
Icebreaker	18:00	Kapittelzaal				
END	19:30					
Early Career Night	19:30	Participants gather @ main entrance 'Het Pand'				

PROGRAM TUESDAY JULY 2

(*: eligible for best student contribution)

	Time	Location	Session	Convenor	Title	Presenter
Start	09:00	Vermeyleylen				
Talk 1 - Keynote	09:00	Vermeyleylen	Integr. Palyno	Munsterman	How reliable are dinocysts as a temperature proxy? A case study on <i>Svalbardella cooksoniae</i> and its implication for paleoclimatological studies of the late Paleogene	Sliwinska, Kasia
	09:30				Paleocene-Eocene southern high-latitude warm pools: the Australo-Antarctic Gulf	Frieling, Joost
Talks 2 to 5	09:45	Vermeyleylen	Integr. Palyno	Munsterman	Oceanographic and vegetation changes across the Palaeocene–Eocene Thermal Maximum in NW Europe and the Arctic	*Mariani, Erica
	10:00				Paleocene-Eocene terrestrial palynology of the Chicxulub impact crater, IODP 364	*Smith, Vann
	10:15				Depositional setting for Eocene seat earths and related facies of the Gippsland Basin, Australia	Korasidis, Vera A.
Coffee break	10:30	Kloostergang				
	10:45					
	11:00				Late Eocene Southern Ocean cooling and invigoration of circulation preconditioned Antarctica for full-scale glaciation	Houben, Alexander J.P.
Talks 6 to 9	11:15	Vermeyleylen	Integr. Palyno	Dybkjaer	The value of integrative palynology in enhancing insights on stratigraphy and environmental change: examples from the Neogene Southern North Sea Basin	Munsterman, Dirk K.
	11:30				Vegetation prior to and during the development of the East Antarctic Ice Sheet: High resolution palynological insights from Sabrina Coast, East Antarctica	*Duffy, Meghan L.
	11:45				Marine microfossils in tidal freshwater deposits? Assessing the value of microfossils as palaeoecological proxies in estuarine environments, based on a case study of the Middle Holocene Scheldt estuary, N-Belgium.	Storme, Annelies
	12:00					
Lunch	12:15					
	12:30	Kloostergang				
	12:45					
	13:00					
Talk 10 - Keynote	13:15	Vermeyleylen	CIMP	Strother	Laudatio career Jacques Verniers	Wicander, Reid
	13:30				Initial steps in ordering events of the Late Ordovician mass extinction: Chitinozoan contributions to Maquoketa Group holostratigraphy (upper Katian, Wisconsin, USA)	*De Boedt, Charlotte
	13:45				Chitinozoan biostratigraphy of the elusive <i>P. linearis</i> graptolite Biozone in Girvan, Scotland	*Lissens, Cecile-Marie
Talks 11 to 17	14:00	Vermeyleylen	CIMP	Strother	Early Silurian acritarchs from the Kallholn Formation in central Sweden	*Walasek, Natalia
	14:15				Palynology of the Early Devonian sediments from Bukowa Góra quarry (Holy Cross Mountains, central Poland)	*Kondas, Marcelina
	14:30				A comparison between Early Devonian (Pragian-Emsian) spore assemblages from the Armorican Terrane Assemblage (Spain), northern Gondwana (Saudi Arabia) and southeast Laurussia	Wellman, Charles H.
	14:45				The diversity of the Palaeozoic phytoplankton and its palaeoecological implications	Kroeck, David M.
	15:00				Devonian diversity dynamics of the terrestrial palynofloras of China	*Shen, Zhen
Coffee break	15:15	Kloostergang				
	15:30					
	15:45				Ongoing investigations of fossil euglenoids show them to be more diverse and more ancient than previously thought	Strother, Paul
	16:00				Paleoecological significance of the fossil euglenid, <i>Moyeria</i> , from the Hirnantian of Saudi Arabia	Strother, Paul
	16:15				Palynology as a tool to assess the potential Carboniferous shale play in the UK: an example from the Bowland Shale Formation and its lateral equivalents	Hennissen, Jan A.I.
Talks 18 to 25	16:30	Vermeyleylen	CIMP	Wellman	Acritarch Assemblages from the Cottonwood Canyon Formation (Early Mississippian), Wyoming, USA	Pocknall, David T.
	16:45				British Zechstein palynomorphs suggest a wetter late Permian environment	*Gibson, Martha E.
	17:00				Palynostratigraphy and thermal maturity of Cambrian-Ordovician rocks in the Zagros Basin (Southwestern Iran)	*Sorci, Andrea
	17:15				Estimation of the thermal maturity of subsurface Silurian sections in Saudi Arabia based on determination of Palynomorph Darkness Index (PDI)	Clayton, Geoffrey
	17:30				Palynology of the Permo-Carboniferous graben sediments below the eastern Molasse Basin, Austria.	Jäger, Hartmut
END	17:45					
Conference Dinner	19:00	Het Pakhuis				

PROGRAM WEDNESDAY JULY 3

(*: eligible for best student contribution)

	Time	Location	Session	Convenor	Title	Presenter
Start	09:00	Vermeylen	Analytical Palynology			
Talk 1 - Keynote	09:00	Vermeylen	Analytical Palynology	Vandenbroucke	Dinoflagellate and dinocyst carbon isotope biogeochemistry: a novel tool for reconstructing dinoflagellate paleoecology and past CO₂ concentrations	Sluys, Appy
	09:30				Testing the toxic effect of redox-sensitive metals on Palaeozoic palynomorphs through synchrotron XRF elemental mapping, electron microprobe and LA-ICP MS measurements	*De Weirdt, Julie
Talks 2 to 6	09:45	Vermeylen	Analytical Palynology	Vandenbroucke	Pyrolysis-GC×GC-TOF MS —a new tool for determining the macromolecular composition of palynomorphs	Dutta, Suryendu
	10:00				Core-top calibration and first application of the dinoflagellate cyst based pCO ₂ barometer	Frieling, Joost
	10:15				Dinoflagellate cyst counts versus DNA metabarcoding: a test case from the Bay of Brest, NW France	Mertens, Kenneth N.
	10:30				Sporopollenin	Versteegh, Gerard J.M.
Coffee break	10:45	Kloostergang				
	11:00					
	11:15				Methodological assessment of micro-FTIR as a tool for the characterization of macromolecular dinoflagellate cyst compositions and chemotaxonomy	*Meyvisch, Pjotr
Talks 7 to 10	11:30	Vermeylen	Analytical Palynology	Mertens	Contributions from micro-FTIR analysis to the macromolecular composition of dinoflagellate cysts and acritarchs	Gurdebeke, Pieter R.
	11:45				<i>Impagidinium pallidum</i> morphology and biomolecular characteristics of Quaternary and Holocene cysts from Labrador Sea and Baffin Bay: taxonomic and paleogeographical implications	Mudie, Peta J.
	12:00				The Peridiniacean lineage and its transition to freshwater environments: the strange case of <i>Peridinium limbatum</i>	McCarthy, Francine M.G.
	12:15					
	12:30					
Business Lunch / Lunch	12:45	Rest. Pand/Kloostergang				
	13:00					
	13:15					
	13:30					
	13:45				Last interglacial oceanographic and primary productivity changes in the Santa Barbara Basin, southern California (ODP Hole 893A).	Pospelova, Vera
	14:00				Postdepositional aerobic and anaerobic particulate organic matter degradation succession reflected by dinoflagellate cysts: the Madeira Abyssal Plain revisited	Zonneveld, Karin A.F.
Talks 11 to 17	14:15	Vermeylen	General Palynology	McCarthy	From bi-polar to regional distribution of modern dinoflagellate cysts, an overview of their biogeography	Marret, Fabienne
	14:30				Transport bias by ocean currents in sedimentary microplankton assemblages: Implications for paleoceanographic reconstructions	Bijl, Peter K.
	14:45				Assessing the utility of freshwater dinoflagellate cysts in paleoecological studies – a 33 lake calibration set and down core analysis from NW Ontario, Canada	*Danesh, Donya C.
	15:00				The hidden potential of <i>Desmidiaceae</i> : assessing the utility and sensitivity of desmids as paleoenvironmental proxies of change - a 32 lake calibration set and down core analysis from NW Ontario, Canada	*Danesh, Donya C.
	15:15				Neotropical Biome Evolution	Jaramillo, Carlos
Coffee break	15:30	Kloostergang				
	15:45					
	16:00				Comparative foraging behaviour among stingless bees from Pacific and Central regions in Mexico	Ramirez-Arriaga, Elia
Talks 18 to 22	16:15	Vermeylen	General Session	Marret	Clitellate annelid cocoons – neglected components of palynoassemblages	McLoughlin, Steve
	16:30				A global review of calibrated dinoflagellate cyst events: status check	Bijl, Peter K.
	16:45				Online access to over 200,000 high resolution digitized palynological slides from Mesozoic and Cenozoic intervals on the Norwegian Continental Shelf	Williams, Robert W.
	17:00				A short story on the life of W.H. Eberhard Schulz (1931-2017)	Gravendyck, Julia
Closing	17:15	Vermeylen	Closing remarks - best student presentation	Katrin Ruckwied AASP president		
END	17:30					
Incoming Board Meeting	18:00	Sacristie				

CONFERENCE POSTERS

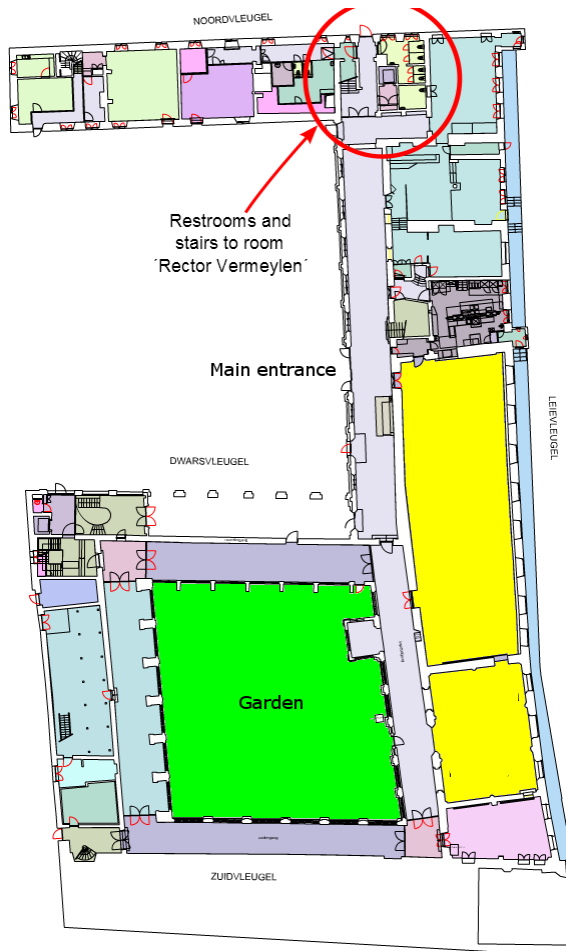
(*: eligible for best student contribution)

Title	Presenting author	Co-authors
Evaluating the Shelf-Margin Eocene Coaledo Formation, Oregon: an Integrated Palynology, Geochemistry and Organofacies Study	*Barbato, Allison	Warny, S., Armentrout, J. M. and Demchuk, T. D.
A review of the acritarch genus <i>Saharidia</i> Combaz 1967	Benachour, Houcine B.	Benaslah, M., Gurdebeke, P.R., Kroeck, D.M., Mertens, K.N., Navidi-Izad, N., Raevskaya, E.G. and Servais, T.
Palynological and calcareous nannofossil record from Early Cretaceous (late Barremian–early Aptian) sections of the Galve subbasin (Maestrat Basin, Spain)	Buratti, Nicoletta	Danubio Sousa Lopes, F., Ricciardi, F., García-Penas, A., San Miguel, G., Aurell, M. and Cirilli, S.
The <i>Parvodinium umbonatum</i> puzzle- is there more than one species identified as cysts of <i>P. umbonatum</i> in freshwater lakes?	*Danesh, Donya C.	McCarthy, F.M.G., Krueger, A., Sangiorgi, F. and Cumming, B.F.
Aquatic palynomorphs of the Late Permian Galilee Basin (Australia)	Götz, Annette E.	Wheeler, A. and Esterle, J.S.
Early Devonian animal remains of Bukowa Góra in terms of palynology (Holy Cross Mountains, Poland)	*Kondas, Marcelina	Filipiak, P., Zatoń, M. and Wawrzyniak, Z.
The palynological record of the Late Devonian, global Dasberg Event (Holy Cross Mountains, Poland)	*Kondas, Marcelina	
The rise of flowering plants in high southern latitudes	Korasidis, Vera A.	Wagstaff, B.E.
Morphological variability in acritarch populations from the early Darrivilian (Middle Ordovician) of Öland, Sweden: indicators of sea-level change	Kroeck, David M.	Chaigneau, B., Eriksson, M.E., Lindskog, A., Munnecke, A. and Servais, T.
Ecology and taphonomy of the recent freshwater dinoflagellate <i>Peridinium limbatum</i> : insights from sediment trap and lakebed studies	*McCarthy, Francine M.G.	Krueger, A.M., Danesh, D.C., Mertens, K.N. and Cumming, B.F.
Geochemical and Palynological Analyses of the Witbank and Highveld Coalfields, Karoo Basin, South Africa	*Moutevelis, Peter	Warny, S., Peng, Y. and Götz, A.E.
Palynostratigraphy of Upper Cretaceous Sequences of the Yola Sub-basin, Upper Benue Trough, Nigeria	Musa Bappah, Usman	Brasier, A.T., Jolley, D.W., Abubakar, U. and Mukkafa, S.
Cretaceous climatic reconstruction from Argentina based on palynological data	Pramparo, Mercedes B.	Vento, B., Narvaez, P.L., Mego, N. and Puebla, G.G.
First report of the Miocene palynofloras from Tomellín Formation and Phyllarenite Quiotepec, Oaxaca, Mexico	Ramírez-Arriaga, Elia	León-Carreño, M., Martínez-Hernández, E., Prámparo, M., Martínez-Bernal, A. and Nieto-Samaniego, A.F.
Dinoflagellate marker species of the relic Paratethyan seas: Pannonian to Caspian basins	Richards, Keith	Mudie, P.J., Richards, K., Rochon, A. and Bakrač, K.
Distribution of characteristic microfossils groups in the deposits of the Jurassic and Cretaceous of Ukraine	Shevchuck, Olena	Vajda, V.
Dinoflagellate cyst events across the H1 (ETM-2) and H2 hyperthermal events at the southern edge of the North Sea Basin	*Steeman, Thomas	Stassen, P., Steurbaut, E. and Louwye, S.
Analytical data on the pine pollen wall – the first reported natural nano-foam structure - and comparisons with other natural and synthetic foams	Stukins, Stephen	Cojocar, R., Mannix, O., Capron, M., Miller, C.G. and Pacureanu, A.
Fungal spores as a palaeovegetation proxy in East Africa	*van der Velden, Daan	Verschueren, D. and Louwye, S.
Palynomorphs, marine invertebrates and citizen science: A multi-proxy study of the early Jurassic recovery at Lyme Regis, UK	*Walley, Rebecca	Twitchett, R., Whiteside, J. and Stukins, S.
The importance of micro-charcoal data from palynological slides: An example of fire intensification linked to aridification on the Tibetan Plateau	Warny, Sophie	Miao, Y., Wu, F., Fang, X., Lu, H., Fu, B., Song, C., Yan, X., Escarguel, G., Yang, Y., Meng, Q. and Shi, P.

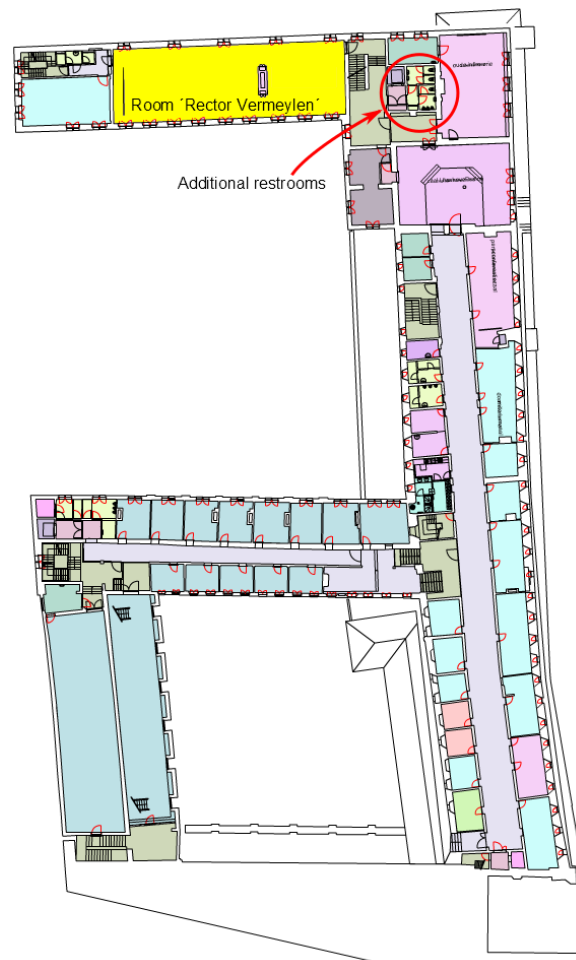
VENUE INFO AND PLAN

The conference will take place at 'het Pand', Ghent University's main conference venue, right in the historical city centre of Ghent and housed in a former medieval Dominican monastery. Ghent is an enchanting and vibrant city, which is often referred to as one of the most beautiful historic cities in Europe. From St. Michael's bridge, literally 2 minutes away from the meeting venue, there is a breath-taking view of the skyline of Ghent with the three impressive towers of St. Nicholas' Church, the Belfry with its bell tower and St. Bavo's cathedral, which houses the world-famous painting "The Adoration of the Mystic Lamb" by Jan van Eyck (1426-1432), currently being restored, but open to the public. Traces of the Middle Ages run throughout the city. The old port, with its guild halls on the Graslei and Korenlei, is merely one example of the beautiful sights this town has to offer. Not far from the Graslei arises the Castle of the Counts, once the medieval fortress of the Counts of Flanders.

All of the talks will be given in the room 'Rector Vermeylen' (2nd floor)



ground floor with main entrance



second floor with main conference room